

# The Secret Garden

Frances Hodgson Burnett

<https://www.lovereadings4kids.co.uk/extract/9345/The-Secret-Garden-by-Frances-Hodgson-Burnett.html>

Up to 'There was dying people on every side and panic in the bungalows.'

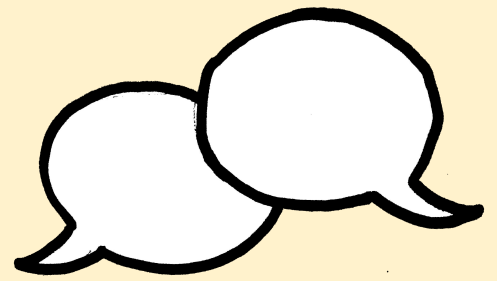
# Quick Start

- Where was Mary Lennox sent?
- Who was she to live with?
- What disease broke out?
- What happened to Mary's Ayah?

# Vocabulary Check

- handed her over to the care of an Ayah
- if she wished to please the Mem Sahib
- a sickly, fretful, ugly little baby
- she was grinding her teeth
- cholera

# Partnered Talk



WHEN Mary Lennox was sent to Misselthwaite Manor to live with her uncle everybody said she was the most disagreeable-looking child ever seen. It was true, too. She had a little thin face and a little thin body, thin light hair and a sour expression. Her hair was yellow, and her

What did people mean when they said Mary was disagreeable-looking?

# Individual Thinking



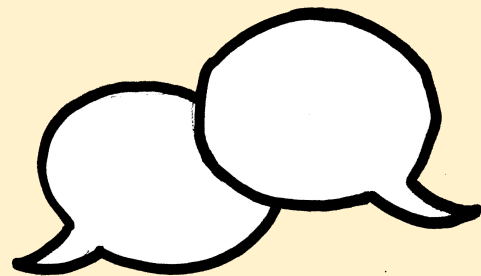
Why might Mary have always been annoyed and disagreeable?

# Individual Thinking



When did Mary first get the feeling that something was wrong?

## Partnered Talk



*‘To call a native a pig is the worst insult of all’*

Why is this?

# Individual Thinking

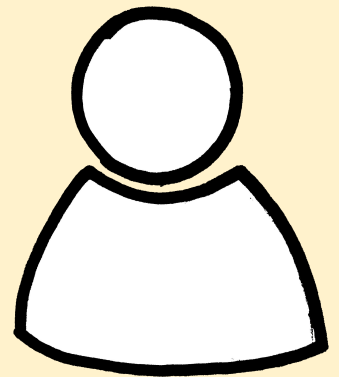


*‘Mary stood shivering from head to foot’*

Why might Mary be shivering from head to foot?



## Solo Work



Predict what the Mem Sahib will do and if it will involve Mary at all.

Then, independently read to the end of the extract to see if you were close or even correct.