



# Witheridge Church of England Primary Academy

Fore Street, Witheridge, EX16 8AH Tel: 01884 860518

[admin@witheridge.devon.sch.uk](mailto:admin@witheridge.devon.sch.uk)



**‘Encourage One Another and Build Each Other Up’**

1 Thessalonians 5: 11

Thankfulness	Compassion	Perseverance	Forgiveness	Friendship	Courage
--------------	------------	--------------	-------------	------------	---------

## Newsletter – Friday 8<sup>th</sup> December 2023

Dear Parents and Carers,

The first of our very Christmassy weeks has been so much fun! On Monday, it was a privilege to watch the FSU Nativity. The children did such a good job of remembering their lines and the words to their songs. Well done FSU, and thank you to all the staff for your hard work.



On Wednesday, the school was full of cheeky little elves! The children looked so good in their elf outfits, and it was wonderful to discover that we had raised an enormous £51 for the Alzheimer's Society. Thank you to everyone who donated via our Just Giving page.



On Thursday, it was great to see lots of colourful and exciting Christmas Jumpers! We managed to raise £20 for Save the Children. If you have old Christmas Jumpers at home that are too small, please donate them to our PTFA for children to wear next year, or during the holidays this year. We still have a couple of jumpers left in the school office, if you would like to pick up a bargain Christmas jumper, please speak to Mrs Eastman in the school office.



Today, the children in KS1 and KS2 have taken to the stage for the first of their four Nativity performances! We hope those of you that have been so far have enjoyed the show, and for those of you coming next week - you are in for a treat!



**Life, Love and Learning to the Full**  
Building Community ~ Building Futures ~  
Building Learning Power ~ Building Self Esteem

Just a reminder that next week we have the next 3 performances of 'Christmas with the Aliens', Christmas dinner on Wednesday, Class 3 & 4 Carol Singing at The Firs on Thursday and finally our Christmas church service and Class parties on Friday! Phew! Busy week ahead!

Finally, in some sad news, Miss Phillips will be leaving us at the end of this half term. I would like to thank Miss Phillips for all her hard work and support and wish her all the best for the future.

I hope you have a lovely weekend.

All the best,

*Miss Ratcliffe*

### **Arbor Accounts**

Now that we are approaching the end of term, please can you make sure that all Arbor accounts (Meals, Breakfast and After School Clubs) are paid up in full. If you are having any problems with this, please contact the school office between the hours of 9.00am - 3.30pm



<b>Team Meal Menu – Autumn Term 2023</b> <b>Week 2: W/B 11<sup>th</sup> December</b>	
<b>Monday</b>	<b>Cheese &amp; Tomato Pasta Bake</b> V – Broccoli & Cheese Bake Vegetables or Salad & Garlic Bread Fresh Fruit Salad & Yogurt
<b>Tuesday</b>	<b>Cottage Pie</b> V – Quorn Sausage & Mash Mixed Veg Peaches & Ice-Cream
<b>Wednesday</b>	<b>CHRISTMAS DINNER DAY!</b> V – Vegetarian Roast Roast Potatoes, Pigs in Blankets, Stuffing, Seasonal Veg, Cranberry sauce & Gravy Mince Pie & Cream or Jelly & Ice Cream
<b>Thursday</b>	<b>West Country Sausages</b> V – Vegetarian Sausage Mashed Potato, Vegetables & Beans Artic Roll & Strawberry Sauce
<b>Friday</b>	<b>Bobbie's Brilliant Buffet!</b> Selection of party foods, perfect for a Christmas party Chocolate Cracknel & Ice Sponge

Also available every day: - Jacket Potato with Tuna, Cheese and/or Beans. Yogurt or Fresh Fruit.

Cost of School lunches: Nursery – £1.94 per meal.  
 Reception & KS1 children – Universal Infant Free School Meals, KS2 children £2.53 per meal.

**Payment to be made via The Arbor App**

A gentle reminder that we are a **NUT FREE SCHOOL** and we have a number of students, staff and visitors with serious nut allergies.



With this in mind, could we politely ask that NO products containing nuts be sent into school.

If you have any questions in relation to this, please contact the School Office.

Thank you for your consideration and for safeguarding our students.





## Early Years Funding for January 2024 (Spring Term)

Please apply for your 30-hour code, if you are eligible, before the 15<sup>th</sup> December to ensure that your code is in place in time for January 2024. The link below will take you to the website for all the necessary details. Please let us know your successful code and your national insurance number so that your code can be verified on the DCC Portal. If you have any questions, please ask Mrs Eastman in the school office.

[Apply for 30 hours free childcare - GOV.UK \(www.gov.uk\)](https://www.gov.uk/apply-for-30-hours-free-childcare)

Or

<https://www.childcarechoices.gov.uk/>

Was your child born between  
**1st September 2019** and  
**31st August 2020?**

## How to Apply for a Primary School Place in Devon

You can apply online at  
**[www.devon.gov.uk/admissionsonline](http://www.devon.gov.uk/admissionsonline)**  
from 15th November 2023 to the 15th January 2024

If you cannot access the school  
admissions website you can get  
more information by calling our  
Education Helpline on  
**0345 155 1019**  
or email: [admissions@devon.gov.uk](mailto:admissions@devon.gov.uk)



Even if you have already given  
details to a primary school, you  
must apply for a place through the  
Admissions Team. This is the only  
way to apply; other forms or lists  
held by schools will not count.

Devon  
County Council

WITHERIDGE PRIMARY ACADEMY  
PRESENTS

# BATTLE OF THE BANDS

FEATURING  
3, 4

14:00 15TH DECEMBER 2023 - 15:00 5TH JANUARY 2024

\*ANSWER AS MANY QUESTIONS AS POSSIBLE\*  
PLAY IN ANY GAME TYPE\* THE WINNING CLASS WILL HAVE THE  
HIGHEST NUMBER OF CORRECT ANSWERS PER PUPIL\*  
ASK YOUR TEACHER FOR FULL DETAILS AND RULES\*

**TIMES TABLES  
ROCK STARS**

### TT Rockstars Battle

Over the Christmas holidays, there will be a TTRS battle taking place between Class 3 and Class 4. Details will be posted on Google Classroom, and in the attached flyer.

If you find yourself stuck in on a rainy day, or with a few minutes free, please encourage your children to log in, practise their multiplication facts and support their classmates.

TTRS has an app, which is compatible with most devices. If your child has access a tablet or other electronic device, or is likely to receive one for Christmas, please help them to install the app so they can get the practice in.

Good luck (especially to Class 4) and Merry Christmas!

Mrs Nott.

## Key Dates for the Autumn Term 2023 – Last week of Autumn Term

**No PE or Forest School until after Christmas**

Monday 11 <sup>th</sup> December	Nativity Performance 2 @ 2pm Nativity Performance 3 @ 6pm
Tuesday 12 <sup>th</sup> December	Nativity Performance 4 @ 4pm
Wednesday 13 <sup>th</sup> December	Christmas Dinner Day Music Tuition with Mr Rogo Stay and Play Session in FSU at 13.45
Thursday 14 <sup>th</sup> December	Class 3&4 Carol singing @ The Firs @ 11am Music Tuition with Mr Rogo
Friday 15 <sup>th</sup> December	Christmas Church Service @ 10am Nursery and Toddler Group Christmas Party at 9am <b>Last Day of the Autumn Term 2023</b>

### Dates for your diary

**These dates are intended as a guide and you will be notified of any changes.**

### SCHOOL TERM DATES 2023 / 2024

Autumn Term	Spring Term	Summer Term
First Day <del>6th September 2023</del> <del>Half term –</del> <del>23rd – 27th October 2023</del> Last Day <b>15th December 2023</b>	First Day 3rd January 2024 Half-term 12th - 16th February 2024 Last Day 28th March 2024	First Day 15th April 2024 Bank Holiday 6th May 2024 Half-term 27th - 31st May 2024 Non Pupil Day 3rd June 2024 Last Day 23rd July 2024

Non-pupil days/occasional holiday days: 2nd January 2024, 3rd June 2024, 24th, 25th & 26th July 2024

## Residential Trips

### Year 5 Residential to London

Our Year 5's are starting to look forward to their trip to London in the New Year.  
Please do not forget that the final payment is due on the 26th January 2024.

### Year 6 Adventure International Bude

Please do not forget to sign your child up to their final residential trip of Primary School  
by the 6th February.



Parents  
Teachers  
Friends  
Association

You can buy maps for the Witheridge Christmas Window advent trail from the School Reception and Two Moors stores. £1 a map and proceeds to the PTFA (playground equipment fund).

Thank you to everyone who supported, helped, got involved in every way for the Christmas Square Fayre. It was a lovely coming together of the community. Popcorn and raffle tickets were a big hit 🌟

It's not too late to buy raffle tickets online <https://witheridgeptfa.sumupstore.com/>

Buy tickets for the prize you want including some AMAZING prizes like... 2x tickets to Sandy Park EXETER CHIEFS v. Glasgow on 13/01/24, day passes for Disney Land Paris, and meal for two at The Mole!

We are hoping to sell tickets after the nativity performances too. Winners drawn on 14th so you can collect your prize on 15th!

## Witheridge Christmas Advent Window Trail 2023



Maps £1.00

All proceeds Witheridge PTFA

Charity Reg No. 1079365







Saturday 16th December 2023 - 11am - 1pm  
At  
St John the Baptist Church, Witheridge.

We would encourage parents to stay and take part.

For more details and to book your place, so that we can ensure  
we have enough crafts and food,  
please contact. Sue Wells 01884 861383



The Church of St John the Baptist, Witheridge



Wednesday 13th of December 12-2pm  
Come and join us for hot soup, tea and coffee.

The church will be heated, board games and jigsaw available.  
FREE - Donations welcome.

# Christmas bingo!

**WITHERIDGE YFC**

*With thanks to Marion and Dave!*

Wednesday 13th December  
7pm arrival for 7.30 eyes down  
Thelbridge Village Hall

Full house- Chicken Dinner!  
More prizes available to win!  
Raffle!

CASH &  
SEASONAL  
GIFTS  
TO BE  
WON

**20<sup>TH</sup>**  
**DEC**

The Mire Inn  
**CHRISTMAS**  
Quiz Night

DARTMOOR  
BREWERY

ELANOR  
ALES

HANLONS  
BREWERY

PRIZES DONATED BY:

**LWC**

7.30PM  
START

4  
PER TEAM

£14 PER  
TEAM

PIGS + BLANKETS, STUFFING BALLS & ROASTIES FOR EACH TEAM  
£4 DONATION PER TEAM TO DEVON AIR AMBULANCE

WEST  
WILDELSHOCK  
FARM SHOP

SIMMONS  
Fruit Sales

EAST BURROW

Shedland & Smith  
Traditional Butchery

PLEASE COME AND JOIN US FOR OUR

## CHRISTMAS BINGO

ON THE 6th of DECEMBER 2023

AT THELBRIDGE HALL  
6.45PM DOORS OPEN  
7.30PM EYES DOWN

**SUPER PRIZES**

GRAND DRAW AND ANY  
DRAW PRIZES YOU BRING  
WOULD BE GREATLY APPRECIATED.

**ALL ARE WELCOME**

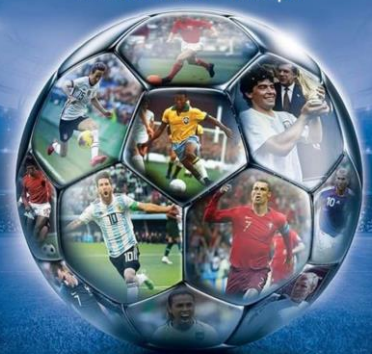
ANY QUERIES PLEASE CALL MARION  
ON 01884 860530

INTERNATIONAL TRIBUTE ARTIST  
**JAY MERCURY**  
A TRIBUTE TO  
QUEEN  
**QUEEN**  
EAGLES  
PARTY  
**2024**  
WITHERIDGE SPORTS CLUB  
WITHERIDGE, TIVERTON, EX16 6AH  
31ST DECEMBER 2023  
9-10PM  
TICKETS: £10

• **Witheridge Football Club** •

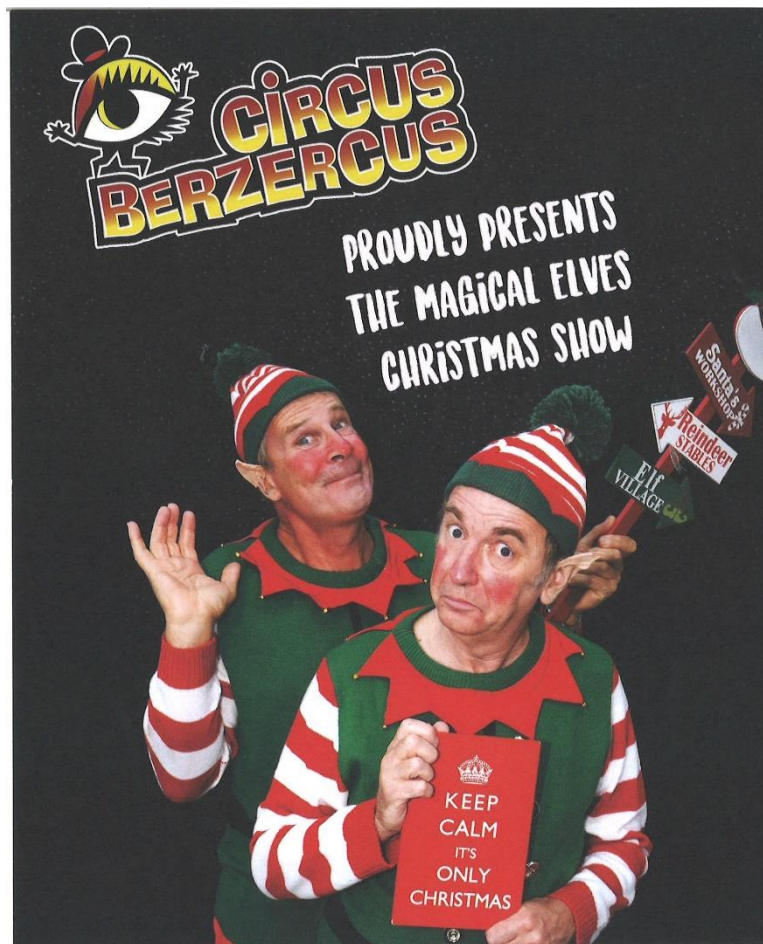
## FOOTBALL QUIZ NIGHT

Date: 29th December Time: 7pm



Food and drink, prizes, raffle, £5 each.  
max 4 people per team





**December 23<sup>rd</sup>** Doors open 16.30 for 17.00 performance.

To reserve your free ticket please  
visit our website [witheridgeparishhall.co.uk](http://witheridgeparishhall.co.uk)  
or our Facebook page [facebook.com/WitheridgeParishHall](https://facebook.com/WitheridgeParishHall)



Come along and join us for a free fun packed family evening at the Parish Hall on  
Saturday 23<sup>rd</sup> December.

Circusberzercus will be performing The Magical Elves Christmas Show, starting  
at 5.00 pm (doors open at 4.30)

During the interval we will be providing a Christmas tea for the children.

The entertainment and Christmas tea is a gift from the Parish Hall, so completely  
free of charge.

However, we need to know the numbers we are catering for, so please fill in the  
form below.

Numbers are limited so please book early to avoid disappointment.

Please remember that it is essential for children to be accompanied by a  
parent/responsible adult.

There will also be a cash bar open for mulled wine, mince pies and a selection of  
drinks!



**Libraries Unlimited**

# Cold Days, Warm Libraries

Your library. Warm welcoming and here for life.

**BARNSTAPLE LIBRARY**

## Your Library with a serving of Soup

### FREE HOT SOUP

Wednesday 29th November  
Wednesday 6th December  
Monday 11th December  
Wednesday 20th December

Soup served from 12pm whilst stocks last



Supported by **Devon County Council** and **TORBAY COUNCIL**

[librariesunlimited.org.uk/events](https://librariesunlimited.org.uk/events)  
Libraries Unlimited is a registered charity 1170092. To donate, please visit [librariesunlimited.org.uk](https://librariesunlimited.org.uk)

**Libraries Unlimited**

**BARNSTAPLE LIBRARY**

# CHRISTMAS EVENTS

## DATES FOR YOUR DIARY:

NOVEMBER-DECEMBER: Festive children's clothes swap in the children's library.

Wednesday 6th December: Orchard Vale school choir  
11.30am - 12pm in the foyer.  
Drop in

Saturday 9th December: Drop-in Christmas crafts  
10am - 12pm  
Drop in

Tuesday 12th December: Festive story time and hot chocolate under the tree.  
4pm - 5pm  
Suitable for children 3-8 years old. Drop in

Wednesday 13th December: Festive Fun for grown-ups around the tree followed by hot chocolate.  
3.30-4.30pm  
Drop in

Saturday 16th December: E-Christmas card making sessions  
Morning: 10am - 12pm  
Afternoon: 2pm - 4pm  
Book at the library

Thursday 21st December: Circus Berzercus - 2pm  
£5 per person book at the library



**Libraries Unlimited**

# Christmas Cheer

Join us at our festive coffee morning with something for the whole family

Take Note Community Choir  
Craft & Book Sale  
Free children's craft activities  
Delicious refreshments

Saturday 16 December  
10am-1pm  
Tiverton Library



Libraries Unlimited is a registered charity 1170092. To donate, please visit [librariesunlimited.org.uk](https://librariesunlimited.org.uk)

Supported by **Devon County Council** and **TORBAY COUNCIL**

**Libraries Unlimited**

# ESPECIALLY WELCOME

## @ TIVERTON LIBRARY

Start the week right at our relaxed sessions

Children under 12 with additional needs and their families are especially welcome to join us at our drop in relaxed library sessions. Share books, try out our sensory nook, explore our sensory toys and chat to other families

Every Monday\*  
10am - 12pm  
Tiverton Library  
\*Except Bank Holidays

Come along on Monday 18th December for a special festive welcome. No need to book. Contact us for more details

01884 244 644  
[tiverton.library@librariesunlimited.org.uk](mailto:tiverton.library@librariesunlimited.org.uk)




Libraries Unlimited is a registered charity 1170092. To donate, please visit [librariesunlimited.org.uk](https://librariesunlimited.org.uk)

Supported by **Devon County Council** and **TORBAY COUNCIL**



🔔 🔔 CHANGE OF DATE!!!!!! Now Fri 22/12 🔔 🔔

Date change due to free family event taking place at parish hall -  
they will advertise in due course.

Santa and his Elf will be making their way around the village  
again courtesy of Rudolf and his sleigh.

Route and timings will be posted nearer the time  
but will start approx. 4.15pm

