



# Witheridge Church of England Primary Academy

Fore Street, Witheridge, EX16 8AH Tel: 01884 860518

[admin@witheridge.devon.sch.uk](mailto:admin@witheridge.devon.sch.uk)



**‘Encourage One Another and Build Each Other Up’**

1 Thessalonians 5: 11

Thankfulness	<b>Compassion</b>	Perseverance	Forgiveness	Friendship	Courage
--------------	-------------------	--------------	-------------	------------	---------

## Newsletter – Friday 24<sup>th</sup> November 2023

Dear Parents and Carers,

I hope this email finds you well. This week, in Classes 2,3 and 4, the children have been completing their termly assessments. The purpose of these is to give teachers a clear picture of where the children are in their learning and the areas that the children need to focus on next term. I am pleased to report that the children have behaved brilliantly this week, and their Class Teachers are very proud of them.

This week, some of our brilliant mathematicians in Class 4 participated in a Maths Competition at Pilton Bluecoat Academy, alongside children from other TEAM schools. I am pleased to report that our mathematicians did very well and Mr Wiggins has reported back that their behaviour was fantastic.

Last week, our wonderful PTFA held a Jumble Sale in the school hall, to raise money for to help the PTFA to fund vital contributions to the school. Thank you for all the kind donations, we were able to pick out some lovely resources to use as part of our OPAL project at Playtime as well. Thank you to our PTFA for running the event.



Next week, the children are excited to begin rehearsing their Nativities! Please keep an eye out for costume requests, coming home in books bags tonight.



**Life, Love and Learning to the Full**  
Building Community ~ Building Futures ~  
Building Learning Power ~ Building Self Esteem



This week, it was lovely to welcome volunteers from our Church community to lead a Messy Church session in school this week. The children loved participating in the different activities, including loading the donkey and making Christmas Star decorations.

Please see the video on our Witheridge facebook page, for the Messy Church children joining in with The Journey to Bethlehem.



Today, we have enjoyed our special Christingle Service, which was led by Adrian and Sue. The children spent some time this morning finding out about the Christingle and the meaning behind it. They also all had an opportunity to make their own Christingle, which they will be bringing home tonight.



Finally, this afternoon we said Goodbye to Heather, who has been supporting Bobbie in the kitchen over the last year. It has been a pleasure to work with you, Heather, and I know you will be missed by the staff and children at Witheridge Academy. Wishing you all the best for your new role.

I hope you have a lovely weekend.

All the best,  
*Miss Ratcliffe*







## Attendance Update

It is great to see everyone working so hard to achieve or beating our **96.5%** target.

We can only do this if we all work together!

Our attendance for the week is **93%**

Our attendance for the year to date **96%**

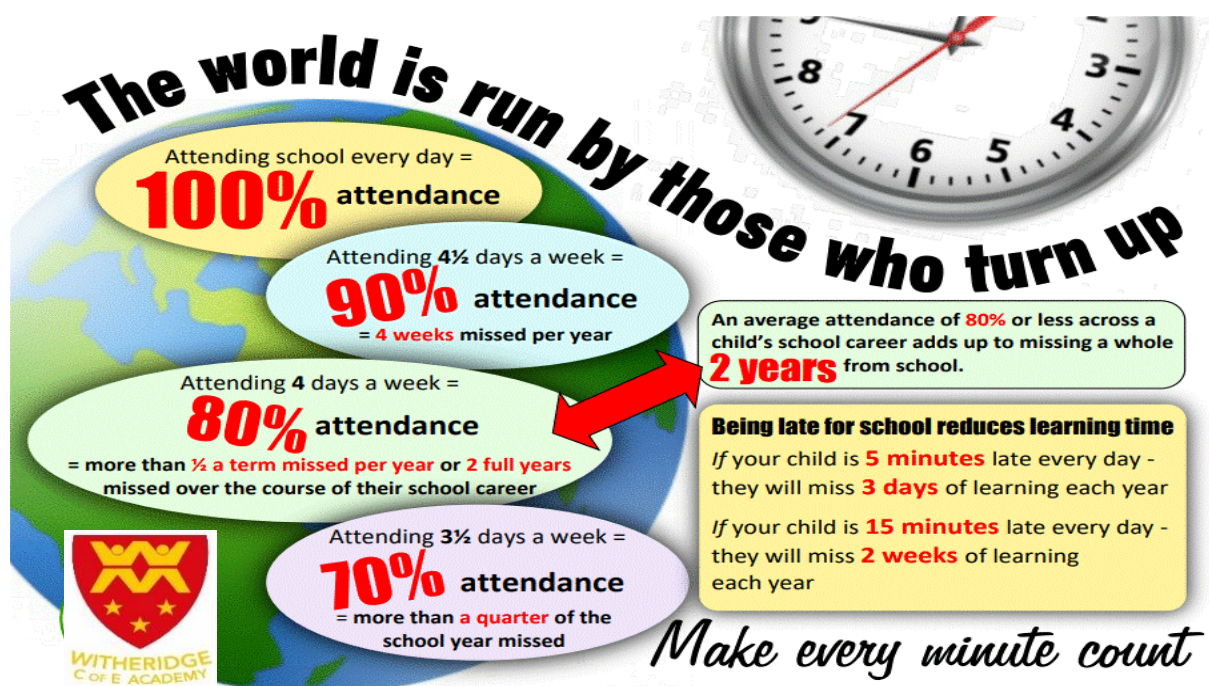
Together Each Achieves More!



Weekly Attendance	
Nursery 1	100%
Nursery 2	70%
Reception	94%
Year 1	99%
Year 2	91%
Year 3	93%
Year 4	94%
Year 5	95%
Year 6	100%

### The School Office

Emails are monitored between 8.30am-3.30pm. If you need to speak to someone urgently please call the school number 01884 860518. If no one answers, please leave a message and someone will contact you as soon as they can.



<b>Team Meal Menu – Autumn Term 2023</b> <b>Week 3: W/B 27<sup>th</sup> November</b>	
<b>Monday</b>	<b>Cheese &amp; Tomato Pizza</b> V – Veggie Nuggets Wedges, Beans & Mixed Veg Fresh Fruit Salad & Yogurt
<b>Tuesday</b>	<b>Spaghetti Bolognese</b> V – Cheese & Tomato Pasta Bake Garlic Bread & Mixed Veg Cheese Cake
<b>Wednesday</b>	<b>Roast of The Day</b> V – Baked Homity Pie Roast Potatoes & Seasonal Veg Fruit Cocktail Platter
<b>Thursday</b>	<b>Beef Burger</b> V – Quorn Burger Potato Wedges, Beans & Sweetcorn Jelly & Ice Cream
<b>Friday</b>	<b>Salmon or Cod Fish Cakes</b> V - Cheese Omelette Golden Fries, Baked Beans & Seasonal Veg Flapjack

Also available every day: - Jacket Potato with Tuna, Cheese and/or Beans. Yogurt or Fresh Fruit.

Cost of School lunches: Nursery – £1.94 per meal.  
 Reception & KS1 children – Universal Infant Free School Meals, KS2 children £2.53 per meal.

**Payment to be made via The Arbor App**

A gentle reminder that we are a **NUT FREE SCHOOL** and we have a number of students, staff and visitors with serious nut allergies.



With this in mind, could we politely ask that NO products containing nuts be sent into school.

If you have any questions in relation to this, please contact the School Office.

Thank you for your consideration and for safeguarding our students.



At Witheridge Academy, we have been enjoying the OPAL project at lunchtimes, the children love exploring different types of play and expressing themselves creatively through their play.

As the weather begins to turn and we experience more wet days, we would like all children to bring in a pair of named wellies that they can keep at school so that they can still engage with messy/muddy play at lunchtimes.

**Please send your child in with their named wellies**

If anyone has any OLD wellies that they would be happy to donate for general use or as spares, please send them in as well.



**Was your child born between  
1st September 2019 and  
31st August 2020?**

**How to Apply for a Primary  
School Place in Devon**

You can apply online at  
[www.devon.gov.uk/admissionsonline](http://www.devon.gov.uk/admissionsonline)  
 from 15th November 2023 to the 15th January 2024

If you cannot access the school admissions website you can get more information by calling our Education Helpline on

**0345 155 1019**  
 or email: [admissions@devon.gov.uk](mailto:admissions@devon.gov.uk)



Even if you have already given details to a primary school, you must apply for a place through the Admissions Team. This is the only way to apply; other forms or lists held by schools will not count.

**Devon**  
 County Council

## Key Dates for the Autumn Term 2023

Monday 27 <sup>th</sup> November	Class 4 – PE Class 4 Group 2 – Forest School Teacher Led Club – Football & Jambie Jams Club
Tuesday 28 <sup>th</sup> November	Rocksteady (No Film Club or Times Table Club – Clubs finished) Opal Working Party group meeting
Wednesday 29 <sup>th</sup> November	Reception Class Vision Screening Class 3 – PE Class 3 Group 2 – Forest School Farm School – Class 4 Group 2 Music Tuition with Mr Rogo Stay and Play Session in FSU at 13.45
Thursday 30 <sup>th</sup> November	Reception Class – PE (AM) Class 2 – PE (PM) Infant B Group 2 – Forest School Music Tuition with Mr Rogo Teacher Led Club – Class 4 Christmas Craft & Story Club
Friday 1 <sup>st</sup> December	Stay and Play Session in School Hall at 9am Class 1 – PE (PM) Infant A Group 2 - Forest School PTFA Christmas Fayre/Lantern Parade

### Dates for your diary

Monday 4 <sup>th</sup> December	FSU Nativity Performance 1 @ 10am
Monday 4 <sup>th</sup> December	FSU Nativity Performance 2 @ 2pm
Tuesday 5 <sup>th</sup> December	Rocksteady Concert
Wednesday 6 <sup>th</sup> December	Elf Day – Raising money for Alzheimer's Society
Thursday 7 <sup>th</sup> December	Christmas Jumper Day – Raising money for Save the Children
Friday 8 <sup>th</sup> December	Nativity Performance 1 @ 10am
Monday 11 <sup>th</sup> December	Nativity Performance 2 @ 2pm
Monday 11 <sup>th</sup> December	Nativity Performance 3 @ 6pm
Tuesday 12 <sup>th</sup> December	Nativity Performance 4 @ 4pm
Wednesday 13 <sup>th</sup> December	Christmas Dinner Day
Friday 15 <sup>th</sup> December	Christmas Church Service @ 10am
Friday 15 <sup>th</sup> December	Nursery and Toddler Group Christmas Party at 9am
Friday 15 <sup>th</sup> December	Last Day of Term

**These dates are intended as a guide and you will be notified of any changes.**



SCHOOL TERM DATES 2023 / 2024		
Autumn Term	Spring Term	Summer Term
First Day <del>6th September 2023</del>	First Day 3rd January 2024	First Day 15th April 2024
<del>Half term – 23rd – 27th October 2023</del>	Half-term 12th - 16th February 2024	Bank Holiday 6th May 2024 Half-term 27th - 31st May 2024
Last Day 15th December 2023	Last Day 28th March 2024	Non Pupil Day 3rd June 2024 Last Day 23rd July 2024

Non-pupil days and occasional holiday days: ~~4th & 5th September 2023~~, 2nd January 2024, 3rd June 2024, 24th, 25th & 26th July 2024

SCHOOL TERM DATES 2024 / 2025		
Autumn Term	Spring Term	Summer Term
First Day 5th September 2024	First Day 7th January 2025	First Day 22nd April 2025
Half-term 28th October - 1st November 2024	Half-term 17th - 21st February 2025	Bank Holiday 5th May 2025 Half Term 26th - 30th May 2025
Last Day 20th December 2024	Last Day 4th April 2025	Last Day 22nd July 2025

Non-pupil days and occasional holiday days: 3rd & 4th September 2024, 6th January 2025, 2nd June 2025 & 23rd July 2025

### Mr Wiggans Forest School News....

This week the pupils have been learning about apples. We have focused on the top six types of apple bought in the UK although there are more than 7500 varieties around the world. The pupils carried out a taste test on a few varieties, comparing sweetness, texture and how juicy the apple was. We discussed the benefit of the apple and why it is the nation's favourite fruit. The children learnt about the lifecycle of the apple and how the apple is turned into a variety of dessert dishes and drinks.



### Luna North Artist visit to Class 4

On Thursday, children in Class 4 had the privilege of welcoming Luna North, a professional artist, into school to work with us for the day. Luna showed us some fantastic techniques and tools, and we produced some truly incredible art work using lino printing techniques. As always, the children were polite, curious and enthusiastic about their learning - a real credit to the school. A big thanks to Luna, too, for making the day so much fun!



## Essebeare Farm School

This week a group of the Year 5 pupils visited Essebeare Farm in preparation for the pupils up and coming new topic "Sow, Grow and Farm".

Farmer Olly started the session talking to the students about the weather and the importance for farmers to monitor it daily. Farmer Ollie showed the pupils the Weather App he uses on his phone and how it showed the weather is due to change and get a lot colder over the next few days with the night-time temperature dropping to just 1 degree centigrade. It has been a tough month for farmers with the wet weather they have had. Sheep use 40% more energy to keep warm when they are wet rather than this energy going into the growth of the lambs. Hence the end yield is less.

The pupils fed Farmer Olly's cows and then we moved to his polytunnel to look at what he still had growing. Farmer Ollie explained the different farming practices from Pastoral Farming, Horticulture, Arable and Mixed.

We then helped Farmer Olly move some of his sheep to new pastures. He has about 170 sheep in total.

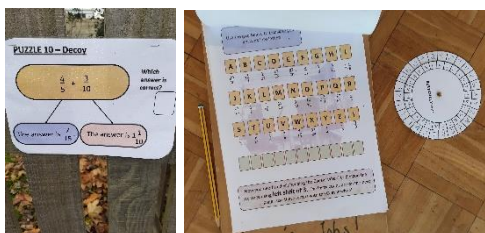


## Maths Challenge

Five of our Class 4 pupils attended a Maths Challenge Event at Pilton Bluecoat Academy in Barnstaple as part of the TEAM Multi Academy Trust. The pupils were split into teams of three or four combining pupils from Witheridge, Brayford, Umberleigh, Pilton, High Bickington and Swimbridge schools.



The teams were given a short presentation about the part Bletchley Park played during the world wars in decoding messages by the Germans, including how the Enigma Machine was instrumental in this process, combined with the talents of many mathematicians.



Teams were given a challenge of finding orienteering markers by solving mathematical fraction problems to find out a corresponding letter of the alphabet. They then used their own Bletchley Park code-breaking dial to find out the true letters.

Our students once again did Witheridge proud, showing great mathematical knowledge and solving the problems.

Congratulations go to Graeson who was in the winning team and Sophia who was in the team that came third.



# YEAR 5 & 6 MATHS CHALLENGE



On Wednesday 22<sup>nd</sup> November, 8 TEAM schools came together to take part in a Year 5 and 6 maths challenge. They exercised their mathematical brains, solving tricky fraction problems on an orienteering course in order to code-break. Each participant received a 'Mathlete' badge. It was a fantastic afternoon and a real pleasure to see children from the schools working with each other.





DEADLINE

26

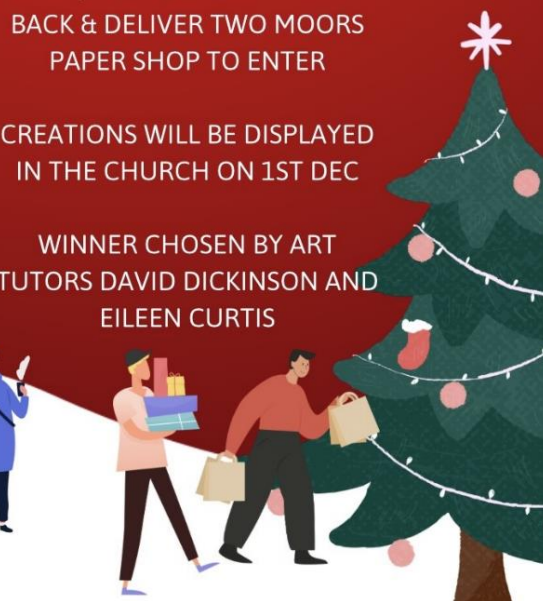
NOV 12PM

WOULD YOU LIKE TO TURN ON  
THE VILLAGE CHRISTMAS  
LIGHTS???

COLOUR/PAINT A CHRISTMAS  
SCENE, NAME/AGE/TEL ON THE  
BACK & DELIVER TWO MOORS  
PAPER SHOP TO ENTER

CREATIONS WILL BE DISPLAYED  
IN THE CHURCH ON 1ST DEC

WINNER CHOSEN BY ART  
TUTORS DAVID DICKINSON AND  
EILEEN CURTIS



LANTERN PARADE  
SCHOOL PERFORMANCE  
GROTTO, LIGHT  
SWITCH ON, MULLED  
WINE & MINCE PIES,  
BBQ, CRAFT MARKET

FRI 1ST DEC, PARADE 4.15 FROM  
SCHOOL, STALLS OPEN 4.30 IN  
THE SQUARE, WITHERIDGE  
COMP TO SWITCH ON THE  
LIGHTS - A CHRISTMAS  
PICTURE/PAINTING FROM  
A CHILD, HANDED IN AT  
THE PAPERSHOP BY SUN  
26TH NOV 12PM, JUDGED  
BY ART TEACHER ELAINE  
CURTIS

Event managed & sponsored  
by Knights Of Witheridge





[www.cookstars.co.uk](http://www.cookstars.co.uk)



[@cookstarsnorthdevon](https://www.facebook.com/cookstarsnorthdevon)



[@oliviacoostars](https://twitter.com/oliviacoostars)

## Winter Wonderful Weekend in South Molton

**FRIDAY 24TH NOVEMBER**  
Christmas Light Switch On from  
5pm with late night shopping and  
lantern parade

**SATURDAY 25TH NOVEMBER**  
Kick off to Christmas Market  
8am to 2pm

**SUNDAY 26TH NOVEMBER**  
Festive Festival of Food & Drink  
10am to 4pm

*Free Ice skating in the lorry  
park for all three events!*

## Kids Christmas Workshop at:

**YMCA - SOUTH MOLTON**  
**SAT 2ND DEC 2 - 4PM**

Decorate a  
Christmas  
snow globe

Make, bake and  
decorate a  
chocolate yule log!

Make a  
decorative  
Christmas  
cracker

Gingerbread man  
bake-at-home kit  
+ cookie cutter

Free drink & snack  
for all children & helpers.



Call Olivia: 07938 608862 Email: [olivia@cookstars.co.uk](mailto:olivia@cookstars.co.uk)

Book online: <https://cook-stars-north-devon.class4kids.co.uk>

# COME ICE SKATING IN SOUTH MOLTON!



**Free ice skating in the Lorry Park on  
Friday 24th, Saturday 25th & Sunday 26th November**





### Welcome Mary & Joseph to stay at your place

'Posada' (Spanish for 'inn') is a Christmas activity which lasts from December 1<sup>st</sup> – 24<sup>th</sup> when small versions of Mary and Joseph travel around different households in the community and stay there for one night. On the following day Mary and Joseph are then taken to the next house where, hopefully, you'll be invited in for a cup of tea or coffee.

People sign up in advance (either with Sue Wells or Ruth Towers) offering to host Mary and Joseph for a night. It's open to everyone, and lots of families find it's a great way to be involved in the Christmas story.

Posada is a chance to host Mary and Joseph – to make room for Jesus at Christmas time!

Mary and Joseph will be collected from Witheridge Methodist Church on Friday 1<sup>st</sup> December, at the beginning of the Crib Festival.

On Christmas eve, the figures are returned to St John's Church, as part of the Crib service, as everyone gets ready to welcome the Christ child once again.