



# Witheridge Church of England Primary Academy

Fore Street, Witheridge, EX16 8AH Tel: 01884 860518

[admin@witheridge.devon.sch.uk](mailto:admin@witheridge.devon.sch.uk)



**‘Encourage One Another and Build Each Other Up’**

1 Thessalonians 5: 11

Thankfulness	Compassion	Perseverance	Forgiveness	Friendship	Courage
--------------	------------	--------------	-------------	------------	---------

## Newsletter – Friday 12<sup>th</sup> January 2024

Dear Parents and Carers,

I hope this newsletter finds you well. We have had a very cold week at Witheridge Academy, with the temperature staying at or below 0 degrees all week! Despite the frosty conditions, the children have had a great time - especially during lunch times as they have had so many lovely new OPAL donations to play with. Thank you to all the Parents and Carers who have donated items for the children to play with. Our OPAL bin is located outside the big playground gate, so please continue to donate any old or unwanted toys, materials or art supplies.



Class 4 started their swimming sessions this week. Mr Manning was very impressed with the children's behaviour both on the way to and from the pool and during their swimming session. Well done, Class 4! A great start.

The children in Class 1 were fortunate enough to visit the Farm this week, as part of the Farm School provision we offer here at Witheridge Academy. A huge thank you to Farmer Olly for your continued support and for delivering such wonderful sessions.



The children are now fully immersed in their new topics in all classes. Please have a look at your child's Curriculum Newsletter, which has been sent home alongside this newsletter.

I hope you have a wonderful weekend.

All the best,  
Miss Ratcliffe



**Life, Love and Learning to the Full**  
Building Community ~ Building Futures ~  
Building Learning Power ~ Building Self Esteem





Weekly Attendance	
Nursery 1	100%
Nursery 2	95%
Reception	98%
Year 1	98%
Year 2	94%
Year 3	98%
Year 4	98%
Year 5	98%
Year 6	87%

### Every Day Counts

Attend and achieve.

Absences add up and have a detrimental effect on your learning.



## Attendance Update

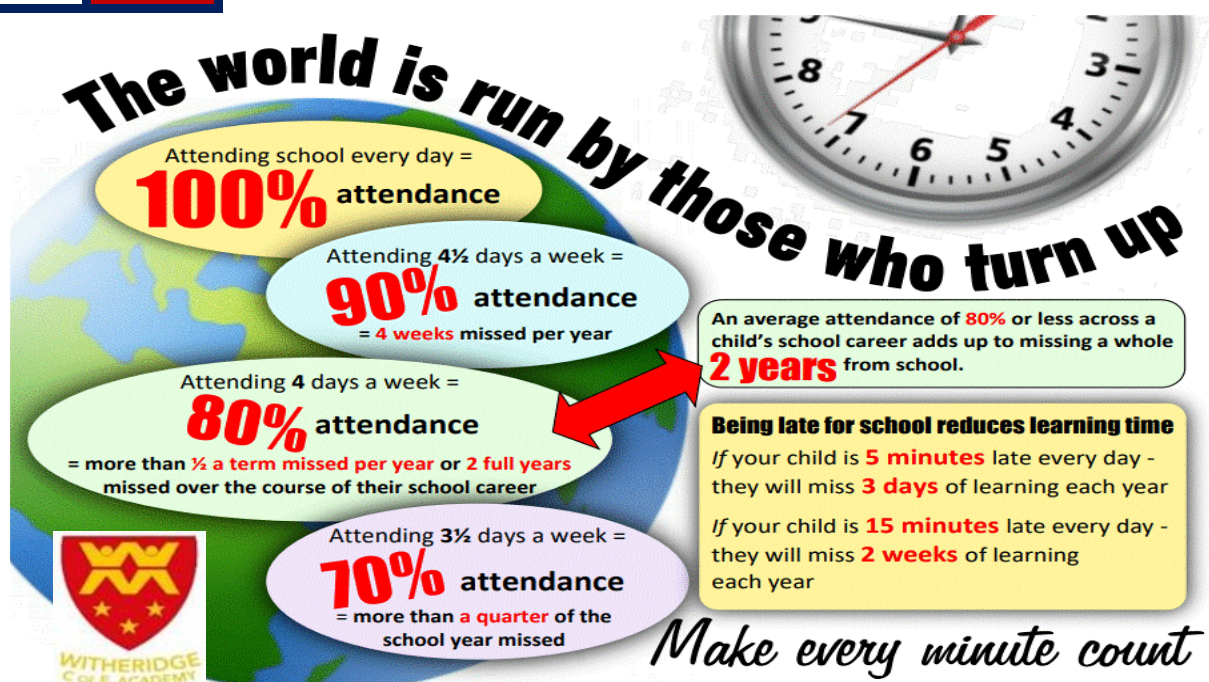
It's great to see everyone working so hard to achieve or beating our **96.5%** target.

We can only do this if we all work together!

Our attendance for the week is **96.4%**

Our attendance for the year to date **96%**

Together Each achieves More!





**Celebration Assembly**  
**Well Done**  
**For receiving a**  
**Certificate of Achievement**



**Class Award**

Nursery – Savanna and Jude for settling in well in the FSU  
Reception – Isabel for fantastic week of learning in maths, phonics and topic work.  
Class 1 – Lacey for great perseverance at farm school in the freezing cold!  
Class 2 – Ruby for her enthusiasm in all areas of her learning.  
Class 3 – Taya for overcoming so many learning barriers this week.  
Class 4 – Lola for contributing well to whole class discussion.

**Writer of the Week:**

Reception – Olivia for excellent sentence writing with finger spaces.  
Class 1 – Monica for putting in amazing effort into her presentation and spelling.  
Class 2 – Mya for working hard to improve her handwriting.  
Class 3 – Betsy for showing a brilliant understanding of newspaper articles and their purpose.  
Class 4 – Molly for beautiful ideas to create similes and metaphors.

**Book Review of the week**

Sophia Class 4

**Reaching 10 on the Nursery Caterpillar**



**20 Merits**

Reception – Wren, Nancy, Reuben, Georgia, Elliot, William, Lorcan, Jasper, Bethan  
Class 1 – Iris, Lily Ed, Archie  
Class 2 – Hazel,  
Class 4 – Graeson, Ebony, Tate, Abbie, Lexi, Gladys, Zack, Paige, Molly & Jayden

**House Points**

**Discovery 120**

**Endeavour 88**

**Enterprise 94**

**Voyager 97**

**Find us on:**

Website: <https://www.teamacademytrust.com/witheridge>

Facebook: @Witheridge CofE Academy

Email: [admin@witheridge.devon.sch.uk](mailto:admin@witheridge.devon.sch.uk)

Witheridge Blog: <https://witheridge.edublogs.org/>



## Essebeare Farm School

This week some of class 1 visited farmer Olly at Essebeare accompanied by Mr.Booth and Mr.Wiggans. We were blessed with some glorious sun despite the cold temperature.

Farmer Olly showed the pupils some of his North Devon Ruby Red cows that were in one of his barns.



The children loved feeding the cows and were amazed to find out that the cows have four stomachs. They learnt how they eat the hay, which then enters the first stomach. Then they bring it back up into their mouths and chew on it again for about thirty minutes, Cudding. Then swallow it again with this time it entering their second stomach. Then once again bringing it back up for more chewing before it enters the third and fourth stomach. Here the food is fermented/rots. Bacteria and microbes attack the yeast produced. After about three days the cow poo it out. We did inspect some of this manure and learnt how this provides its own habitat out in the fields for insects etc which then are eaten by birds who peck into it.



We then did a tour of one of the orchards and took a quick look at the farms hens.







After school club for Nursery up to Year 2  
(Nursery Children must be accompanied by an adult)

Wednesday 24<sup>th</sup> of January 2024  
3.30 - 4.45 pm  
in Class 1's classroom

Parents and Carers are welcome to join us  
and take part.

We will be offering some craft and activities  
based around the Bible story.

Please sign up on arbor to book a place if  
you want to attend so that we have enough  
snacks and crafts available.

Thank you, Sue and Adrian Wells

# COFFEE MORNING

Hosted by St John the Baptist church

Tuesday 16th January

9am to 9.30am

at

Witheridge School Hall

Come and join us for a chat  
over a cup of coffee  
& piece of cake!

Everyone  
Welcome!



Was your child born between  
**1st September 2019** and  
**31st August 2020?**

## How to Apply for a Primary School Place in Devon

You can apply online at  
[www.devon.gov.uk/admissionsonline](http://www.devon.gov.uk/admissionsonline)  
from 15th November 2023 to the 15th January 2024

If you cannot access the school  
admissions website you can get  
more information by calling our  
Education Helpline on

**0345 155 1019**

or email: [admissions@devon.gov.uk](mailto:admissions@devon.gov.uk)



Even if you have already given  
details to a primary school, you  
must apply for a place through the  
Admissions Team. This is the only  
way to apply; other forms or lists  
held by schools will not count.

Devon  
County Council



Did you know that Witheridge C of E Academy  
has its very own blog? Check it out  
here: <https://witheridge.edublogs.org/>

The blog is written and updated by children in  
Class 4, and gives an interesting perspective  
on life and events at Witheridge Academy  
from a child's perspective. There are now  
nearly four years' worth of blog posts to scroll  
through, including lots of recent updates from  
our activities in school this half term. Well  
done to children in Class 4 for keeping  
the blog so well updated!

Team Meal Menu – Spring Term 2024 Week 3: W/B 15 <sup>th</sup> January	
Monday	<b>Cheese &amp; Tomato Pizza</b> V – Broccoli & Cheese Bake Potato Wedges & Vegetables or Beans Fruit & Yogurt
Tuesday	<b>Loaded Fries with Chilli &amp; Cheese</b> V – Quorn Hotdog in a roll Peas & Carrots Scotch pancakes & fruit with Ice Cream
Wednesday	<b>Roast of the Day</b> V – Vegetarian Roast Roast Potatoes, Seasonal Veg & Gravy Fruit Platter
Thursday	<b>Sweet &amp; Sour or Plain Chicken</b> V – Macaroni Cheese Rice and Mixed Vegetables Apple Sponge Pudding
Friday	<b>Cod or Salmon Fish Fingers</b> V – Cheese Omelette Golden Fries, Peas / Carrots or Baked Beans Shortbread Biscuit

Also available every day: - Jacket Potato with Tuna, Cheese and/or Beans. Yogurt or Fresh Fruit.

Cost of School lunches: Nursery – £1.94 per meal.  
Reception & KS1 children – Universal Infant Free School Meals, KS2 children £2.53 per meal.

**Payment to be made via The Arbor App**



A gentle reminder that we are a **NUT FREE SCHOOL** and we have a number of students, staff and visitors with serious nut allergies.

With this in mind, could we politely ask that NO products containing nuts be sent into school.

If you have any questions in relation to this, please contact the School Office.

Thank you for your consideration and for safeguarding our students.

## Pupil Premium Funding – are you eligible?

We receive a sum of money for every child who is entitled to free school meals (or would be if the meals were not provided free of charge to all children in reception and key stage 1). This money is used by the school for the benefit of your child(ren), through funding areas such as additional training for our staff, reduction of class sizes, investing in partnership working with our colleagues in the area to further our expertise, and supporting our staff in working on specialised areas such as speech and language. If there are any changes in your circumstances, please notify the office and Kelly will take you through the procedures to apply for the premium.

Please see useful links below: -

<https://www.gov.uk/apply-free-school-meals>

[https://oneonline.devon.gov.uk/CCSCitizenPortal\\_LIVE/en?ReturnUrl=%2FCCSCitizenPortal\\_live](https://oneonline.devon.gov.uk/CCSCitizenPortal_LIVE/en?ReturnUrl=%2FCCSCitizenPortal_live)



## Key Dates for the Spring Term 2024

Monday 15 <sup>th</sup> January	Class 4 Swimming Class 3 Group 3 – Forest School Teacher Led Club – Choir Club
Tuesday 16 <sup>th</sup> January	Coffee Morning in the School Hall at 9am – Everybody Welcome ☺ Rocksteady Teacher Led Club – Dance, KS2 Football & Film Club <b>NO TIMES TABLE CLUB THIS WEEK</b>
Wednesday 17 <sup>th</sup> January	<b>Class 3 – PE – Whole Class doing PE</b> <b>Class 3 Group 1 – Forest School CANCELLED!</b> Music Tuition with Mr Rogo Stay and Play Session in FSU at 13.45
Thursday 18 <sup>th</sup> January	Reception Class – PE (AM) Class 2 – PE (PM) Infant B Group 3 – Forest School Music Tuition with Mr Rogo School Council Meeting at 1pm Teacher Led Club – Coding Club
Friday 19 <sup>th</sup> January	Stay and Play Session in School Hall at 9am Class 1 – PE (PM) Infant A Group 3 - Forest School

### Dates for your diary

Sunday 21 <sup>st</sup> January	Exmoor Challenge Practice Walk – Tara Trail
Tuesday 23 <sup>rd</sup> January	Film Club
Wednesday 24 <sup>th</sup> January	Farm School Infant B Group 3
Wednesday 24 <sup>th</sup> January	Messy Church 3.30-4.45
Tuesday 30 <sup>th</sup> January	Year 5 London Residential
Tuesday 30 <sup>th</sup> January	Film Club
Wednesday 31 <sup>st</sup> January	<b><u>ALL ASC / Teacher Led Club CANCELLED due to Staff Training</u></b>
Friday 2 <sup>nd</sup> February	NSPCC Number Day
Monday 5 <sup>th</sup> February	Dog Trust Visiting School
Tuesday 6 <sup>th</sup> February	NO FILM CLUB Teacher Led Club – Finished
Tuesday 6 <sup>th</sup> February	Opal Working Party Group Meeting at 3.30pm
Wednesday 7 <sup>th</sup> February	Farm School Infant B Group 1
Thursday 8 <sup>th</sup> February	Exmoor Challenge Practice Walk – Local
Thursday 8 <sup>th</sup> February	School Council Meeting at 1pm
Friday 9 <sup>th</sup> February	Reception & Year 6 National Children Measurement Programme
Monday 12 <sup>th</sup> February	February Half Term

**These dates are intended as a guide and you will be notified of any changes.**

## Residential Trips

### Year 5 Residential to London

Our Year 5's are starting to look forward to their trip to London at the end of this month.  
Please do not forget that the final payment is due on the 26th January 2024.

### Year 6 Adventure International Bude

Please do not forget to sign your child up to their final residential trip of Primary School by the 6th February.

SCHOOL TERM DATES 2023 / 2024		
Autumn Term	Spring Term	Summer Term
First Day— 6th September 2023	First Day 3rd January 2024	First Day 15th April 2024
Half term— <del>23rd – 27th October 2023</del>	Half-term 12th - 16th February 2024	Bank Holiday 6th May 2024 Half-term 27th - 31st May 2024
Last Day— 15th December 2023	Last Day 28th March 2024	Non Pupil Day 3rd June 2024 Last Day 23rd July 2024

Non-pupil days and occasional holiday days:  
~~4th & 5th September 2023, 2nd January 2024, 3rd June 2024, 24th, 25th & 26th July 2024~~

SCHOOL TERM DATES 2024 / 2025		
Autumn Term	Spring Term	Summer Term
First Day 5th September 2024	First Day 7th January 2025	First Day 22nd April 2025
Half-term 28th October - 1st November 2024	Half-term 17th - 21st February 2025	Bank Holiday 5th May 2025 Half Term 26th - 30th May 2025
Last Day 20th December 2024	Last Day 4th April 2025	Last Day 22nd July 2025

Non-pupil days and occasional holiday days: 3rd & 4th September 2024, 6th January 2025, 2nd June 2025 & 23rd July 2025

**No After School Club with Jayne and Laura  
on Wednesday 31<sup>st</sup> January – Whole School Staff Training.**

## Parent & Toddler Group at Witheridge CofE Academy

### Foundation Stage Unit every Wednesday 1.45pm-3.30pm

A range of indoor and outdoor activities will be available for your children, who will have the opportunity to play alongside 2 and 3 year olds who attend the setting.

Wednesday please arrive via the main school entrance and follow signs to the FSU (by 2pm) .  
Parents/carers are welcome to bring your own drink in a cup with a secure lid.

### School Hall every Friday 9am - 10.30am

A small charge of £1 per family will include a drink and healthy snack for the children.

Please note that all parents/carers must be responsible for their child while on school premises.





**PTFA**

Parents  
Teachers  
Friends  
Association

# Valentines Kids Disco

@Witheridge  
Parish Hall

Friday 9th Feb  
5:00 – 7:00pm

[bit.ly/3YmF5ZS](https://bit.ly/3YmF5ZS)



**PREORDER TICKETS BY 4TH FEB**

**Child entry + sausage in a roll = £2**

**ON THE DAY TICKETS**

**Child entry = £1**

**Sausage in a roll = £1.50**

**Pre-school to year 6 (any school welcome)**

**Additional refreshments available**

**Adults and under two's free**

**Bar open – responsible drinking! ;)**

★  
**Facepaint**  
★

★  
**Glitter  
Tattoos**  
★



🎬 Did you know, Witheridge Parish Hall Film Night takes place every month!

🍷 Come and watch some great films with your community for only £5 with bar and refreshments available.

📅 Next showings:

- Saturday February 24, The Great Escaper with Michael Caine and Glenda Jackson
- Saturday March 16 Haunting in Venice with Kenneth Branley
- Saturday April 20, The Miracle Club with Maggie Smith

All will start at 7.30pm at Witheridge Parish Hall. Doors will open at 7pm.

Tickets will be £5 at the newsagents nearer the time or you can pay on the door.

Bar & refreshments will be available.

Make a note in your diaries! 😊🍷

WE'RE BACK!



WITHERIDGE SPORTS CLUB

Withy Kick About - We're back TODAY 📣

We feel like we have been away forever and everyone has forgotten about us but we are back with a HUGE session this Friday!

!Here are some of the things you can expect!

- ⚽ Free of charge Kick about!
- ⚽ Extra-long session time (5.30 - 7) 🌙
- ⚽ A free meal token on arrival (chicken nuggets, sausages or pizza and chips) 🍷
- ⚽ Managers from Witheridge 1st and 2nd team running groups! ⚽
- ⚽ Music 🎵
- ⚽ Bar open 🍷
- ⚽ For non-participating children, meals can be additionally purchased! 🍷

We are so excited to welcome you back and we're so sorry that we have been kept away for so long!

Back with a bang! 💥





# SUNDAY CLUB



next club  
21st January

**SUNDAY CLUB** is held in  
St John the Baptist Church, Witheridge  
from 10:30 until 12:00

For children of preschool & primary age.  
Looking at the Bible in a fun and safe environment  
with **CRAFT, STORIES, GAMES** and more.

For more details email [sundayclub11@gmail.com](mailto:sundayclub11@gmail.com)

All our staff members are certificated with the  
Disclosure and Barring Service (DBS).

**PART OF THE LITTLE DART MISSION COMMUNITY**

A CHARITY  
BINGO  
AT THELBIDGE PARISH  
HALL  
ON 17th JANUARY 2024

DOORS OPEN @7-PM

GAMES START AT 7-30.  
12 GAMES INCLUDING CASH  
FLYER, SPECIAL GAME  
ALL WELCOME  
FULL HOUSES.

A GRAND DRAW  
DRAW PRIZES VERY  
WELCOME THANK YOU  
ANY QUERIES PLEASE RING  
MARION 01884-860530