



Witheridge Church of England Primary Academy

Fore Street, Witheridge, EX16 8AH Tel: 01884 860518

admin@witheridge.devon.sch.uk



‘Encourage One Another and Build Each Other Up’

1 Thessalonians 5: 11

Thankfulness	Compassion	Perseverance	Forgiveness	Friendship	Courage
--------------	------------	--------------	-------------	------------	---------

Newsletter – Friday 19th January 2024

Dear Parents and Carers,

Last week, our Year 6 Exmoor Challengers started their training with a 10-mile walk on the Tarka Trail! The children were FANTASTIC and Mr Manning, Mrs North and I were so impressed with their perseverance, politeness and cheerfulness on the walk. Well done to all the children - we are so proud of you.



This term, we have had some wonderful Parent Volunteers giving up their own time to come in and listen to children read in school. I want to take this opportunity to say a HUGE 'Thank you' to Katie McKenna and Sarah Bragg for volunteering in our school. It is so wonderful to be a part of a school community that actively cares for all the children within it. We always need extra pairs of hands, so if you are available and would like to be involved with the school, please speak to our PTFA who can point you in the right direction, or to myself. We would love to have some willing volunteers to help out with some gardening jobs especially, so please let me know if you're able to help at all.

Next week, some of our Year 5 children are off on an exciting residential trip to London! This trip could not be possible without the support and organisation from TEAM Multi-Academy Trust. Our Year 5 children will join students from High Bickington, Umberleigh, Brayford, Beaford and Horwood and Newton Tracey schools to experience all the sights, sounds and exciting experiences London has to offer. Of course, we will miss the children from school, but we look forward to hearing about their adventures. Mrs Nott will be joining the children for this residential and the remaining Year 5's and the Year 6 children will be supported by Mrs Lewis and Mrs Seymour, alongside Mr Wiggins in Class 4.



It is an exciting week next week as it is DT week! The children in all classes will be completing some exciting DT projects throughout the week all focussed around one of our Key Drivers - 'Building Communities'.

I hope you have a wonderful weekend - it looks like we are in for some well-deserved sunshine!

Kind regards,

Miss Ratcliffe

Life, Love and Learning to the Full



Building Community
Building Futures
Building Learning Power
Building Self Esteem



Please do not
bring your
mobile phone
to school

On Friday, it is NSPCC Number Day! To celebrate all things number, there are a few exciting activities taking place!



- Children can come to school dressed as either their TT Rockstars Avatar (For children in Y2-Y6) or as a number, or something linked to numbers, or something with numbers on if they are in the FSU or Year 1! We are looking forward to seeing some fabulous Rockers and some creative number costumes!
- Children will be participating in a range of number related activities in class



Changes to Nursery Fees

From 1st April 2024, TEAM will be increasing the charges for nursery places:

3/4 year old sessions - **£5.22**

(6.5% increase on our current price of £4.90)

2-year-old session - **£6.30**

(Less that DCC will fund at £7.10 but is a 6.5% increase on our current charge of £5.90)

Reception - Sharing our Learning session

We would like to invite Parents and Guardians to share the Reception children's learning on Friday 9th February from 8.45 – 9.15. The children would love to show you some of the wonderful work they have produced this half term. If you would like to attend but are unable to come at this time, please let me know.



Mr Wiggans Forest School News....

This week some of the pupils have been looking at worms. We went digging on the school grounds to collect some and then observed them with our viewers. We identified the Clitellum (Saddle) and which end is the worms head.

The pupils then set up our new worm world that will enable us to look at the movements of the worms over the next few weeks.

Pupils were amazed to find out that worms breathe through their skins and are also light sensitive. That the worms have tiny retractable bristles that help them to crawl through the soil. Interestingly worms have been around for over 600 million years. The longest worm was found in South Africa and was 22ft long. Wow.

Mr.Wiggans



Essebeare Farm School

At farm school this week with the second ground in Class 1. We were introduced Millie and Gertrude two of Essebeare chickens and learnt about how they dig for worms using their dinosaur feet.



We all then found a moment of quiet as we meditated, whilst listening to nature around us. Then to round off the morning visit, we had a great time feeding the cows and getting our hands dirty moving hay to help feed them! Thank you for a wonderful morning Farmer Olly! Mrs Wyborn ☺





Weekly Attendance	
Nursery 1	98%
Nursery 2	99%
Reception	98%
Year 1	97%
Year 2	93%
Year 3	98%
Year 4	93%
Year 5	95%
Year 6	98%

Every Day Counts

Attend and achieve.

Absences add up and have a detrimental effect on your learning.



Attendance Update

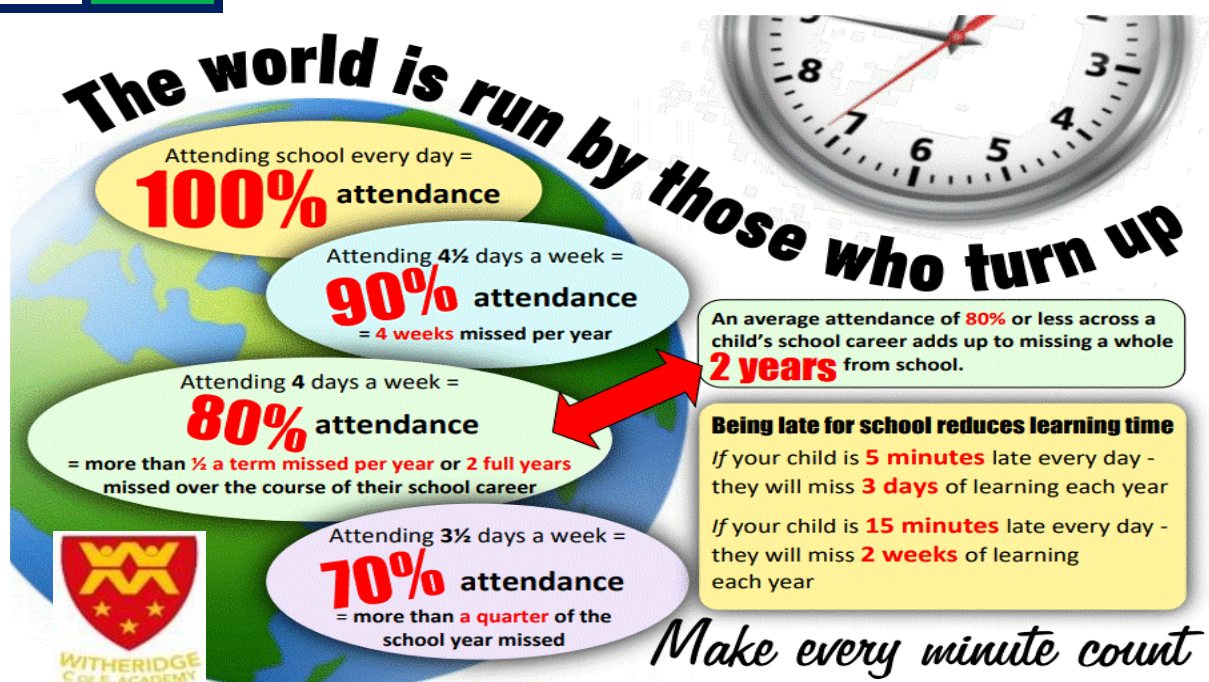
It's great to see everyone working so hard to achieve or beating our **96.5%** target.

We can only do this if we all work together!

Our attendance for the week is **96.3%**

Our attendance for the year to date **96.0%**

Together Each achieves More!





Celebration Assembly
Well Done
For receiving a
Certificate of Achievement



Class Award

Nursery – Arthur for always trying hard with making the right choices.
Reception – Bethan for sharing her palaeontologist knowledge with the class.
Class 1 – Aurora for being a kind friend and for showing kindness to other members of the class.
Class 2 – Ava for showing perseverance in her maths learning.
Class 3 – Bella for always being helpful and showing kindness around the classroom.
Class 4 – Paige for using words of encouragement at all times.

Writer of the Week:

Reception – Nancy for her amazing 'Dinosaur Hunt' story.
Class 1 – Ronnie for writing a wonderful letter home and really persevering with his writing.
Class 3 – Mason for writing a wonderfully informative newspaper article.
Class 4 – Cody for checking accurate punctuation to make your meaning clear.

Book Review of the week

Betsy Nott

Reaching 10 on the Nursery Caterpillar

Monty ☺

20 Merits

Reception – Chester & Olivia
Class 3 – Khalid, Alfie, Jack E & Arthur W
Class 4 – Kyah, Lena & Cody

House Points

Discovery 44

Endeavour 48

Enterprise 36

Voyager 37

Find us on:

Website: <https://www.teamacademytrust.com/witheridge>

Facebook: @Witheridge CofE Academy

Email: admin@witheridge.devon.sch.uk

Witheridge Blog: <https://witheridge.edublogs.org/>

Team Meal Menu – Spring Term 2024 Week 2 - W/B 29 th January	
Monday	Macaroni Cheese V – Vegetarian Sausages & Pasta Seasonal Veg & Garlic Bread Fruit & Yogurt
Tuesday	Beef Lasagne V – Vegetarian Lasagne Crusty Bread, Peas & Carrots Peach melba and ice-cream
Wednesday	Roast of the Day (Pork) V – Broccoli & Cheese Bake Roast Potatoes, Seasonal Veg & Gravy Fruit Platter
Thursday	Hunters chicken or Plain Chicken V - Sweet Potato Curry Rice and Seasonal Veg Iced sponge
Friday	Cod Fish Cakes V – Cheese baguettes Golden Fries, Seasonal Veg & Baked Beans Chocolate Cracknel

Also available every day: - Jacket Potato with Tuna, Cheese and/or Beans. Yogurt or Fresh Fruit.

Cost of School lunches: Nursery – £1.94 per meal.
Reception & KS1 children – Universal Infant Free School Meals, KS2 children £2.53 per meal.

Payment to be made via The Arbor App



A gentle reminder that we are a **NUT FREE SCHOOL** and we have a number of students, staff and visitors with serious nut allergies.

With this in mind, could we politely ask that NO products containing nuts be sent into school.

If you have any questions in relation to this, please contact the School Office.

Thank you for your consideration and for safeguarding our students.

School Council Update

Last week, our School Council met, and made some very exciting decisions. Thank you to Darren Henson for attending as a School Governor and supporting our discussions. The School Council have drafted an Action Plan for our Eco School award, focusing on transport, energy use and water. We have also selected a school charity for this year: Shelter box (see more info here: https://www.youtube.com/watch?v=Ukpl_yM1AKA).

And finally, we've come up with some ideas to make our Opal play times even more fun, including asking our Meal Time Assistants to wear high-vis jackets so they're really easy to find if we need someone to help us. On Thursday, we led a Collective Worship to share our ideas with the whole school. If you have any ideas to help support these initiatives, don't forget to talk to your School Councillor so we can discuss them in our next meeting. Well done, School Council!



Key Dates for the Spring Term 2024

DT WEEK

Monday 29 th January	Class 4 Swimming Class 3 Group 1 – Forest School Teacher Led Club – Choir Club
Tuesday 30 th January	Year 5 leaving for their London Residential Rocksteady Teacher Led Club – Dance, KS2 Football & Film Club NO Times Table Club
Wednesday 31 st January	Class 3 – PE Class 3 Group 3 – Forest School Music Tuition with Mr Rogo Stay and Play Session in FSU at 13.45 <u>ALL ASC / Teacher Led Club CANCELLED due to Staff Training</u>
Thursday 1 st February	Reception Class – PE (AM) Class 2 – PE (PM) Infant B Group 3 – Forest School Music Tuition with Mr Rogo NO Teacher Led Club – NO Coding Club
Friday 2 nd February	NSPCC Number Day Stay and Play Session in School Hall at 9am Class 1 – PE (PM) Infant A Group 3 - Forest School

Dates for your diary

Monday 5 th February	Dog Trust Visiting School
Tuesday 6 th February	NO FILM CLUB Teacher Led Club – Finished
Tuesday 6 th February	Opal Working Party Group Meeting at 3.30pm
Wednesday 7 th February	Farm School Infant B Group 1
Thursday 8 th February	Exmoor Challenge Practice Walk – Local
Thursday 8 th February	School Council Meeting at 1pm
Friday 9 th February	Share our learning session for Reception Class from 8.45am
Friday 9 th February	Reception & Year 6 National Children Measurement Programme
Monday 12 th February	February Half Term

These dates are intended as a guide and you will be notified of any changes.

Residential Trips

Year 5 Residential to London

Our Year 5's are starting to look forward to their trip to London on Tuesday!

Please do not forget that the final payment TODAY!!

Year 6 Adventure International Bude

Please do not forget to sign your child up to their final residential trip of Primary School by the 6th February.

SCHOOL TERM DATES 2023 / 2024		
Autumn Term	Spring Term	Summer Term
First Day— 6th September 2023	First Day 3rd January 2024	First Day 15th April 2024
Half term— 23rd – 27th October 2023	Half-term 12th - 16th February 2024	Bank Holiday 6th May 2024
Last Day— 15th December 2023	Last Day 28th March 2024	Half-term 27th - 31st May 2024
		Non Pupil Day 3rd June 2024
		Last Day 23rd July 2024

Non-pupil days and occasional holiday days:
~~4th & 5th September 2023, 2nd January 2024, 3rd June 2024, 24th, 25th & 26th July 2024~~

**No After School Club with Jayne and Laura
on Wednesday 31st January – Whole School Staff Training.**

Parent & Toddler Group at Witheridge CofE Academy

Foundation Stage Unit every Wednesday 1.45pm-3.30pm

School Hall every Friday 9am - 10.30am

A range of indoor and outdoor activities will be available for your children, who will have the opportunity to play alongside 2 and 3 year olds who attend the setting.

Wednesday please arrive via the main school entrance and follow signs to the FSU (by 2pm) .
 Parents/carers are welcome to bring your own drink in a cup with a secure lid.

A small charge of £1 per family will include a drink and healthy snack for the children.

Please note that all parents/carers must be responsible for their child while on school premises.





PTFA

Parents
Teachers
Friends
Association

Party planning is underway for our disco 🎉 buy your ticket and food before 4th February for a reduced cost. Pre sales help us with organising and keeping costs down.

<https://witheridgeptfa.sumupstore.com> tickets/food also available to buy on the door.

Send those song requests in - the playlist is underway! We're aware there was a printing error for some on the disco flyer coming home in book bags which we're sorting out.

We would be grateful for helpers on the night to help it all run smoothly. We're asking for a few extra helpers so we can all tag team so you're not expected to do the whole duration of the disco. Please sign up to help here: <https://volunteersignup.org/JYD89>

At the last disco, we had a bit of trouble with children pulling on the curtains and going on the stage. This is a polite reminder that children need an adult supervising them, as we do not want to have a bill for damages. Any child who is unaccompanied will be asked to go home.

Please see poster for the new and improved

TREAT FRIDAY!!

**Starting with Enterprise on
Friday 2nd February**

Thank you from the PTFA 😊

Valentines Kids Disco

@Witheridge Parish Hall Friday 9th Feb
5:00 – 7:00pm

bit.ly/3YmF5ZS

PREORDER TICKETS BY 4TH FEB
Child entry + sausage in a roll = £2

ON THE DAY TICKETS
Child entry = £1
Sausage in a roll = £1.50

Pre-school to year 6 (any school welcome)
Additional refreshments available
Adults and under two's free
Bar open – responsible drinking! ;)

Facepaint
Glitter Tattoos

Children to be supervised by parents/carers. Proceeds to Witheridge PTFA. Charity Reg No. 1079365

**NEW AND IMPROVED
TREAT FRIDAY**

FEB	02	ENTERPRISE PROVIDING THE TREATS
MAR	28	VOYAGER PROVIDING THE TREATS
MAY	24	ENDEAVOR PROVIDING THE TREATS
JULY	19	DISCOVERY PROVIDING THE TREATS

**PLEASE DROP OFF YOUR TREATS
TO THE SCHOOL OFFICE ON THE
MORNING OF YOUR DATE**



X f @creditonrfc https://creditonrfc.rfu.club/

COME ALONG AND TRY RUGBY AT CREDITON RFC

YEAR 6 TO YEAR 13 GIRLS

THE TEAM NEEDS YOU - YOU NEED THE TEAM

JOIN US FOR AN INTRODUCTORY SESSION ON **THURSDAY 25TH JANUARY FROM 6PM - 7PM** FOLLOWED BY FREE PIZZA!

GET INVOLVED AT **FINDRUGBY.COM**

England Rugby

Allianz INNER WARRIOR

Witheridge Parish Church Folk Concert

Sunday 28th January 3pm
Coffee and cake from 2.30

COBBLED TOGETHER

Five folk musicians perform a wide variety of songs.
Of the sea. Of the land. Of everyday life.

Guitar, ukulele, mouth organ, whistle, hurdy gurdy and concertina etc..

This is to be a light-hearted concert, a chance to blow away some of the winter's cobwebs in a warm and friendly atmosphere.

Just turn up

Donation's for Folk Groups charity
We will shake a jar at the end.

BUMPER HALF TERM

Join us this February half term to help us celebrate the Tivvy Bumper steam engine!

Saturday 10th to Saturday 17th February 2024 (closed Sunday 11th)

Follow the railway map around the museum, collecting letters to spell your destination
Part of normal admission*

Plus, train toys, board games, dressing up, colouring station & more!

CRAFT sessions on Tuesday 13th and Wednesday 14th February
From 10 - 12. Drop-in
£3 per child with paying adult (£2.50 per child with a museum member)

*Adults £8.50, accompanied kids go FREE!

TIVERTON MUSEUM
of Mid Devon Life

Special Half Term Opening:
Monday - Saturday, 10:00-4:00
www.tivertonmuseum.org.uk
Beck's Square, Tiverton EX16 6PJ
01884 256295
Registered charity 1181976

FOLLOW US @TivertonMuseum