



Witheridge Church of England Primary Academy

Fore Street, Witheridge, EX16 8AH Tel: 01884 860518

admin@witheridge.devon.sch.uk



‘Encourage One Another and Build Each Other Up’

1 Thessalonians 5: 11

Thankfulness	Compassion	Perseverance	Forgiveness	Friendship	Courage
--------------	------------	--------------	-------------	------------	---------

🌿 Witheridge C of E Academy Newsletter – End of Autumn 1 Half Term 2025 🌿

“Encourage one another and build each other up.” – 1 Thessalonians 5:11 Value of the half term: Thankfulness

As we come to the end of this busy and joyful half term, we have so much to be thankful for here at Witheridge C of E Academy. Our school community has truly lived out our vision of *encouraging one another and building each other up*— celebrating learning, supporting one another, and giving thanks for all the opportunities we’ve shared.

🍏 Harvest Festival

Our Harvest Festival was a wonderful celebration of thankfulness and community. The children sang beautifully, shared thoughtful reflections, and reminded us all how important it is to give thanks for the food we enjoy and for those who help bring it to our tables. Thank you to everyone who donated to our Harvest collection — your generosity will make a real difference to local families. Thank you to Denise for taking our contributions to CHAT in Tiverton.



🌸 A Warm Welcome to Our New Reception Children

It’s been a joy to welcome our new Reception children to Witheridge! They have settled in brilliantly, showing curiosity, kindness, and courage as they begin their learning journeys. The older children have been wonderful role models, offering helping hands and encouraging smiles — a perfect example of how we *build each other up*.



📖 Year 4 at the Blundell’s Literacy Festival

Our Year 4 pupils had an inspiring visit to the Blundell’s Literacy Festival, where they met authors, explored stories, and discovered the power of imagination through words. The children returned full of ideas and enthusiasm for writing — thank you to Blundell’s for such an enriching experience!



Life, Love and Learning to the Full



Building Community
Building Futures
Building Learning Power
Building Self Esteem



Please do not bring your mobile phone to school

🏰 Class 4's Trip to Bristol

Class 4 had a fantastic day exploring Bristol as part of their topic work. From the SS Great Britain to the bustling harbourside, the trip brought learning to life. The children showed great teamwork, curiosity, and respect throughout the day — wonderful ambassadors for our school.



🐍 KS1 Reptile Visit

Our younger learners had an exciting encounter with some fascinating reptiles this half term! The visit was a brilliant opportunity to learn about different animals up close, sparking lots of curiosity and awe. There were plenty of brave hands and big smiles as children learned about habitats, diets, and the importance of caring for all living creatures.



🏈 Tag Rugby with TEAM Schools

Our pupils took part in a brilliant Tag Rugby event with our TEAM family of schools. It was fantastic to see so much teamwork, determination, and sportsmanship on display. The children encouraged each other every step of the way — perfectly showing how we *build each other up* both on and off the field.



⚽ Football Match vs Bishops Nympton

Well done to our football team, who played with great spirit and teamwork against Bishops Nympton. Every player gave their best and supported one another throughout the match. We are thankful for the opportunity to play together, make new friends, and represent our school with pride.

💔 A Fond Farewell to Mr Wiggins

This half term, we also say a heartfelt goodbye to **Mr Wiggins**. We are deeply thankful for the care, dedication, and enthusiasm he has shown during his time at Witheridge C of E Academy. He has made such a positive impact on our pupils and staff, always encouraging others and helping to build up our school community.

Mr Wiggins, we will miss your warmth, humour, and commitment to helping every child flourish. We wish you every success and happiness for the future — you will always be part of the Witheridge family.



👁️ Looking Ahead

As we move into the next half term, we give thanks for all that we have learned and achieved together. Let us continue to show gratitude in our words and actions, and to encourage one another in all that we do.

Wishing all our children, families, and staff a restful and happy half term break!

With best wishes,

Miss Ratcliffe

Admissions policy for 2027-28: Annual Consultation

Along with all other schools and academies in Devon, we are consulting on an admission policy for 2027-28. The Local Authority is also consulting on its arrangements – the admissions schemes through which you can apply. You are invited to look at the proposal new policies which are based on policies for this year and next year and to have your say on them.

Our proposed policy is on our admission page and you can see all policies at <http://devon.cc/schoolpolicy> Further information is here: www.devon.gov.uk/admissionarrangements The consultation runs between 1 November and 16 January 2026.

Policies will be determined by the end of February and published in the same places by 15 March 2026 next year. You can comment at schoolsadmissionpolicy-mailbox@devon.gov.uk or by emailing the school.

No changes are being proposed.

Secondary School Transfer for 2025

The online system will close on the **31st October at midnight**.
Please remember to apply online before the closing date.

Any issues, please contact 0345 155 1019 or admissions@devon.gov.uk so the team can support you in the application process.

If you miss this deadline you are at risk of missing out on a place at your preferred school and your local school. You can apply using the link below- <https://www.devon.gov.uk/.../apply-for-a-secondary.../>





Attend Today, Achieve Tomorrow
Every Day Counts!

Weekly Attendance	
Nursery 1	95%
Nursery 2	98%
Reception	97%
Year 1	95%
Year 2	89%
Year 3	93%
Year 4	91%
Year 5	98%
Year 6	96%

Reminders:

- If your child is poorly, please report their absence to the school office on 01884 860205 by 9.20am.
- All medical appointments are to be advised in advance to the school office.
- Any other absences must be applied for via an absence request form.



Attendance Update

It's great to see everyone working so hard to achieve or beating our **96.5%** target.

We can only do this if we all work together!

Our attendance for the week is **94.6%**

Our attendance for the year to date is **95.6%**

Together Each achieves More!



The world is run by those who turn up

Attending school every day = **100%** attendance

Attending 4½ days a week = **90%** attendance
= 4 weeks missed per year

Attending 4 days a week = **80%** attendance
= more than ½ a term missed per year or 2 full years missed over the course of their school career

Attending 3½ days a week = **70%** attendance
= more than a quarter of the school year missed



An average attendance of **80%** or less across a child's school career adds up to missing a whole **2 years** from school.

Being late for school reduces learning time
If your child is **5 minutes** late every day - they will miss **3 days** of learning each year
If your child is **15 minutes** late every day - they will miss **2 weeks** of learning each year



Make every minute count



**Celebration Assembly
Well Done
For receiving a
Certificate of Achievement**



Class Award

Nursery – Mason for settling well in the nursery.
Reception – Chester for using our week’s words in his independent learning.
Class 1 – Finley for great focus and determination in his maths and phonics.
Class 2 – Zara for being a kind friend to children in class 2.
Class 3 – Sam for fantastic curiosity and careful thinking in science.
Class 4 – Khalid for going above and beyond with his class jobs.

Writer of the Week:

Reception – Mia – Thinking carefully about when sounds stay in the boat.
Class 1 – Amelia for writing well-structured sentences both in school and at home.
Class 2 – Olivia for her improvement in handwriting.
Class 3 – Olivia – huge improvement in handwriting.
Class 4 – Olly for using a wonderful range of formal language in his report to Sherlock Holmes.

Contribution:

A huge well done to Scarlett and Bella for their amazing relaunch of the Terracycling project! ♻️👏
Your hard work, creativity and dedication to making our school more sustainable is truly inspiring. Keep up the fantastic work! – Mrs Eastman 😊

Libby – for being super helpful with tidying at lunchtimes – Miss Loosemore.

Librarians book review:

Mya Bibby

Bobbie’s Lunchtime Award:

Jack C for eating a really good lunch every single day.

Reaching 10 on the Nursery Caterpillar:

Beatrice 😊

20 Merits:

Class 1 – Monty
Class 4 - Betsy

House Points

Discovery 25

Endeavour 42

Enterprise 24

Voyager 36

Team Meal Menu – Autumn Term 2025 Week 3 - W/B 3 rd November	
Monday	Margherita 3 Cheese Pizza & Pasta V – Tomato Pasta Bake Baked Beans or Peas Peach Melba & Ice Cream
Tuesday	Butcher Hotdog V – Quorn Dog Potato Wedges, Beans & Sweetcorn Fruit Jelly
Wednesday	Roast of the Day (Chicken) V – Quorn Bites Roast Potatoes & Seasonal Veg Pancakes & Cream (With various topping)
Thursday	Minced Beef Soft Taco V – No meat Mince Taco Rice, Seasonal Veg or Salad Ginger Cake & Custard
Friday	Fish Cakes V – Vegetable Fingers Golden Fries, Seasonal Vegetables & Baked Beans Shortbread Biscuit

Also available every day:
Jacket potato with Tuna, Cheese or Beans
Yoghurt or Fresh Fruit

Cost of School lunches:
Nursery – £2.00 per meal.
Reception & KS1 children –
Universal Infant Free School Meals,
KS2 children £2.58 per meal.

Payment to be made via The Arbor App

A gentle reminder that we are a **NUT FREE SCHOOL** and we have a number of students, staff and visitors with serious nut allergies. With this in mind, could we politely ask that **NO** products containing nuts be sent into school.



If you have any questions in relation to this, please contact the School Office.

Thank you for your consideration and for safeguarding our students.

Term Dates 2025/2026		
Autumn Term	Spring Term	Summer Term
<ul style="list-style-type: none"> • First day of term – Thursday 4th September 2025 • Half Term - Monday 27th October - Friday 31st October 2025 • Last day of term - Friday 19th December 2025 	<ul style="list-style-type: none"> • First day of term - Tuesday 6th January 2026 • Half Term - Monday 16th February - Friday 20th February 2026 • Last day of term – Thursday 2nd April 2026 	<ul style="list-style-type: none"> • First day of term – Monday 20th April 2026 • Bank Holiday - May Day - Monday 4th May 2026 • Half Term - Monday 25th May - Friday 29th May 2026 • Non Pupil Day - Monday 1st June 2026 • Last day of term – Tuesday 21st July 2026

Key Dates for the Autumn Term 2025

Monday 3 rd November	Bike Ability for Year 5 Reception PE – am Class 3 PE – pm Teacher Led Clubs: Football & Craft Club
Tuesday 4 th November	Bike Ability for Year 5 Rocksteady Teacher Led Clubs: Times Table
Wednesday 5 th November	Cross Country @ High Bick Y2 to Y6 – Details emailed out! Vision Screening for Reception Class Bike Ability for Year 5 Class 4 PE Mr Rogo – Music Tuition Teacher Led Clubs: Gardening Club with Chris
Thursday 6 th November	Bike Ability for Year 5 Class 2 PE Mr Rogo – Music Tuition Steve Godfrey Drumming Teacher Led Clubs: Cook Stars Cooking
Friday 7 th November	Bike Ability for Year 5 Class 1 PE Teacher Led Club: Homework Club at Lunchtime

Autumn Term - Dates for your diary:

Monday 10 th – 14 th November	Anti-Bullying Week
Tuesday 11 th November	KS1 Northcott Theatre – Children’s book show.
Tuesday 18 th November	School Council Meeting MTC Parent & Carer Information Session @ 3pm
Wednesday 19 th November	Class 3 @ RAMM Exeter – Details to follow
Monday 24 th – 28 th November	UK Parliament Week
Monday 24 th – 28 th November	TEAM Go Beyond
Tuesday 2 nd December	Festive Farm Quest – KS1 School Council Meeting
Friday 5 th December	10am FSU Nativity Performance 1 2:30pm FSU Nativity Performance 2
Tuesday 9 th December	2pm KS1 & KS2 Nativity Performance 1 6pm KS1 & KS2 Nativity Performance 2
Wednesday 10 th December	10am KS1 & KS2 Nativity Performance 3 4pm KS1 & KS2 Nativity Performance 4
Monday 15 th December	PTFA Pantomime Rocksteady Concert 2pm
Thursday 18 th December	Church Service 10am @ St John the Baptist
Friday 19 th December	Last day of term

These dates are intended as a guide and you will be notified of any changes.



Breakfast & After School Club

Bobbie's Brekkie served at 8am (£4.00)

Or

Drop off at 8.30am (£2.00)

After School Club with daily activities

3.30-4.30 or 3.30-5.30

£4.00 per hour

All payable on the Arbor App, discount for Pupil Premium

(Nursery aged children charged at hourly rate.)



We will once again be supporting the Royal British Legion Poppy Appeal this year and we have a selection of poppy items in the office for the children to choose from. We will be selling these AFTER half term.





Share Our Learning Session

Thank you to all the parents and carers who joined Reception Class us for our Share Our Learning session today! It was wonderful to see so many of you in the classroom, sharing in your children's excitement as they proudly showed you their beautiful work. The children loved taking the lead — showing off their Topic Work, as well as sharing our Class Floor Book and Religion and World Views Book. We hope you enjoyed looking through the displays around the room, which celebrate all the effort and creativity the children have put into their learning this term. Your continued support means so much to us and to the children — thank you for being part of their learning journey!

Mrs North





**REMEMBER
ONCE A WEEK,
TAKE A PEEK**

Head lice has been reported

Head lice, is still being reported to being in school (Class 3, 2 and FSU). As many of you are aware, head lice can cause problems both at home and in school. Please try to check your child's hair regularly and if you see any head lice, then treat both them and the whole family.

To find out more about this then please follow the link below.

<http://www.onceaweektakeapeek.com>

Headlice & Nits

Unfortunately we have had a couple of cases of Nits in school this week. Please can parents make sure to check their children's hair over the weekend.



Head lice are small insects, up to 3mm long.

Head lice can make your head feel:

- itchy
- like something is moving in your hair

The only way to be sure someone has head lice is by finding live lice.

You can do this by combing their hair with a special fine-toothed comb (detection comb). You can buy these online or at pharmacies.

Treat head lice as soon as you spot them.

You should check everyone in the house and start treating anyone who has head lice on the same day.

There's no need to keep your child off school if they have head lice.



They can be difficult to spot in your hair.

Wet combing

Lice and nits can be removed by wet combing. You should try this method first.

You can buy a special fine-toothed comb (detection comb) online or from pharmacies to remove head lice and nits.

There may be instructions on the pack, but usually you:

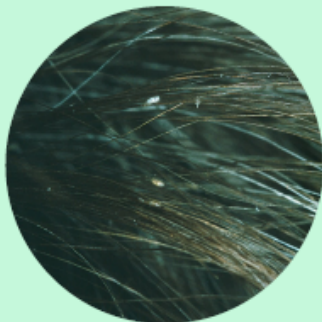
- wash hair with ordinary shampoo
- apply lots of conditioner (any conditioner will do)
- comb the whole head of hair, from the roots to the ends

Do wet combing on days 1, 5, 9 and 13 to catch any newly hatched head lice. Check again that everyone's hair is free of lice on day 17.

Medicated lotions and sprays

Ask a pharmacist for advice if you have tried wet combing for 17 days, but your child still has live head lice.

They may recommend using medicated lotions and sprays. These kill head lice in all types of hair, and you can buy them from pharmacies, supermarkets or online.



Head lice eggs (nits) are brown or white (empty shells) and attached to the hair.

Check the pack to see if they're OK for you or your child and how to use them.

If lotions or sprays do not work, speak to a pharmacist about other treatments.



PTFA

Parents
Teachers
Friends
Association

Maybe you have some unwanted alcohol or new items in your cupboard that would be perfect for our bingo raffle. We are seeking donations of alcoholic bottles (spirits or wines) and raffle prizes for the bingo at the end of November. We would also love vouchers or prizes from any local businesses. Please speak to Cat Seymour or Susie Kingdom to hand over donations or let us know if you think you can sponsor us as a business. You can also hand donations in at the main office. TIA!

**CHRISTMAS
MEGA BINGO NIGHT**

Fun For The Whole Family! A night not to be missed!
Saturday 29th November
Doors open 6.15pm, Eyes down 7pm
@ Witheridge Parish Hall
EX16 8AG
Amazing prizes to be won and Christmas raffle

*Bingo and raffle - Cash only approx.
£10 per person for a full book £1 per raffle ticket strip
Bar and tuckshop- Alcoholic and soft drinks & snacks - cash and card
For further information contact Cat or Suzie on 07970180637
Raising funds for Witheridge C of E Academy*

LIGHTHOUSE HOLIDAY CLUB

October Half Term

Tuesday 28th Oct, 10am - 3pm
Witheridge Parish Hall

Come and join us at 'REDEMPTION RANCH' for fun, games, craft, music & Bible stories

All Children - Reception to Yr6 - welcome

Dress for the **Wild West** if you want (no guns please)

Y - Packed lunch & water bottle required - Afternoon snack provided

All day site security. All staff are DBS checked

Please use QR code or register at;
<https://tinyurl.com/RALHC>

Registration closes **SUNDAY 19th Oct**

For further information please email;
Lighthouseclub.org@gmail.com

Witheridge Gardening Club

BEES & BEE KEEPING

TIVERTON BEEKEEPERS

PARISH HALL
 7.00PM
 WEDNESDAY
 29TH OCTOBER

MEMBERS FREE		NON-MEMBERS £3.00
-----------------	--	----------------------

FOR FURTHER DETAILS RING
 01884 861323



School holidays adding to your energy costs?

Our energy team can help



Call us on **01237 879 233** to see if you're eligible for help with fuel vouchers and grants, and to receive tips on how to cut your bills

PUMPKIN PATCH

25TH - 27TH OCTOBER | 10AM - 4PM

FAMILY FUN | UNDERCOVER BARN
 PUMPKIN CARVING | FACE PAINTING
 HOT FOOD & DRINK | FEED THE PIGS

PICK YOUR OWN

NO BOOKING REQUIRED
VISIT OUR FACEBOOK
FOR MORE DETAILS

WESTON FARM, KNOWSTONE, EX36 4ED