

# The Christmas Pudding Conundrum

The North Pole was buzzing with excitement as Christmas Day had finally arrived. Mrs Claus had baked a marvellous Christmas pudding for all of the elves to enjoy. However, as they dug into the pudding and took their first bites, the elves were so disappointed. Someone had swapped the sugar for salt and Mrs Claus' Christmas pudding had been ruined!

As Detective Chief Inspector on the case, you know that one of the elves must have played a nasty trick on Mrs Claus but which one was it? You have taken down the names and descriptions of 20 elves who were seen near Mrs Claus' kitchen on Christmas Eve. There are also five important clues that have been discovered inside the kitchen.

To crack the case, you will need to solve each clue and check the information with the list of names. Will you be able to solve the mystery and stop the naughty elf before any more Christmas treats are ruined?

**Good luck!**



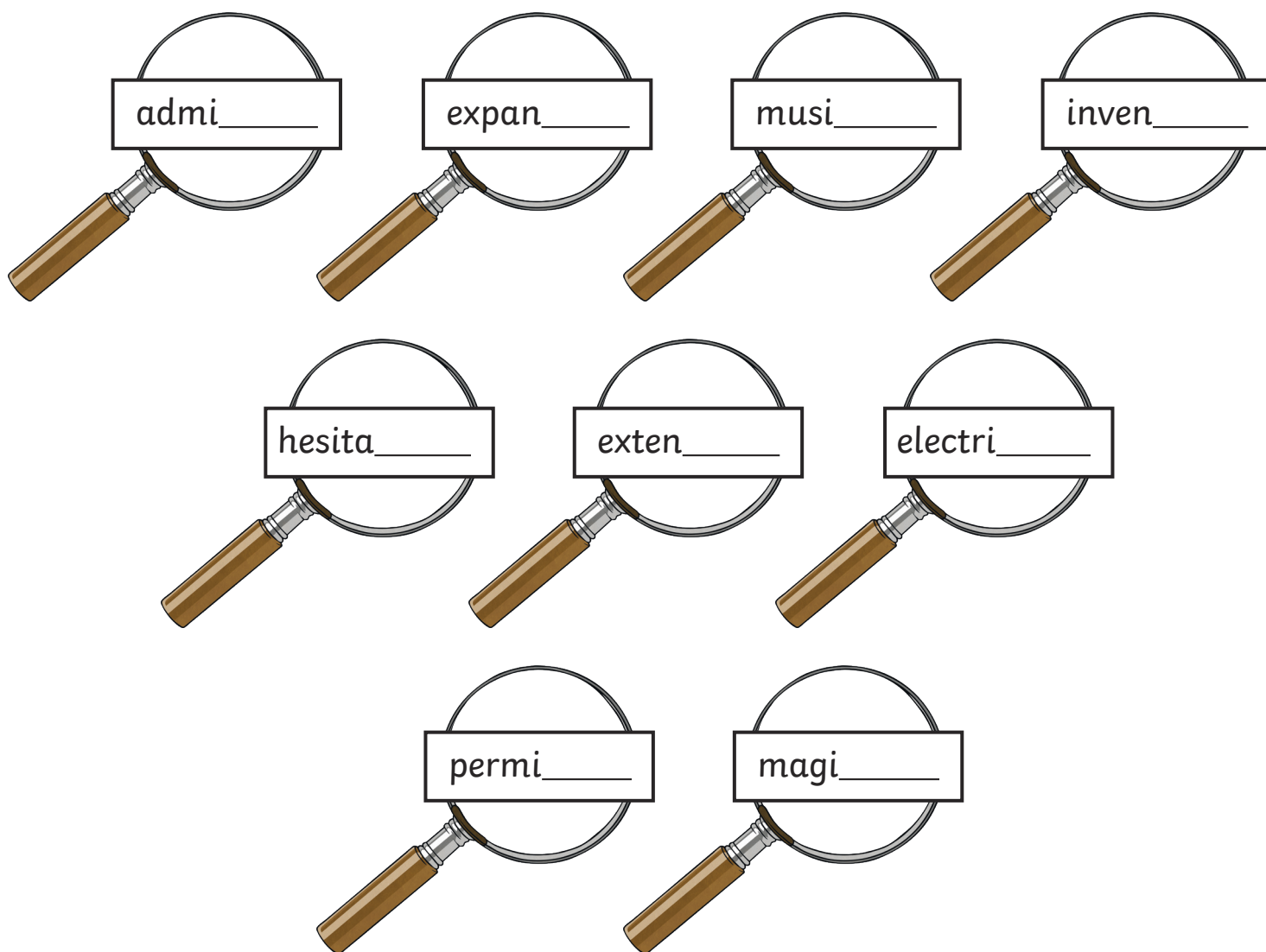
# Elf Descriptions

Elf Name	Shoe Size	Hair Colour	Hat Colour	Job in the Workshop	Christmas Eve Snack
Berry Cracklecheer	3	black	red	gift wrapper	cookies
Bing Picklebeard	2	black	green	tree decorator	mince pies
Blitz Sparklejoy	4	blonde	red	gift wrapper	stollen
Buddy Glittersnoot	5	black	red	inventor	cookies
Butters Gingersnap	5	brown	green	bow applier	mince pies
Buttons Twinklegift	8	blonde	green	gift wrapper	cookies
Coco Sparklestar	6	black	red	inventor	stollen
Fluffy Hollyhat	2	ginger	white	bow applier	mince pies
Frosty Morningdance	7	brown	red	inventor	stollen
Fuzzle Chillyscarf	4	black	green	gift wrapper	cookies
Hope Flippyjoy	5	blonde	green	tree decorator	mince pies
Jewel Sleepynight	9	ginger	white	bow applier	stollen
Jingle Crackerbox	3	black	red	gift wrapper	cookies
Pepper Snowivy	9	brown	white	inventor	mince pies
Perky Happyhat	6	ginger	white	tree decorator	stollen
Pookie Snifflesnuff	8	black	red	inventor	cookies
Shimmer Snowtree	3	brown	white	tree decorator	mince pies
Snowball Milkglitter	5	black	green	gift wrapper	stollen
Tiny Sugarfun	2	blonde	white	tree decorator	cookies
Winter Candyplum	4	black	red	inventor	mince pies

The naughty elf who swapped the sugar must be \_\_\_\_\_.

## Clue 1 A Cut above the Rest

As the first person on the scene, you find an important piece of evidence. Trapped beneath the mixing bowl, you find a long strand of hair. It must belong to the sugar swapper! Draw a line to match the word to the correct ending. Make sure that you spell the words correctly. The word ending with the most matching words will show the colour of the naughty elf's hair.



● **tion**

ginger hair

● **sion**

blonde hair

● **ssion**

brown hair

● **cian**

black hair

The word ending with the most matching words is \_\_\_\_\_ so the naughty elf's hair must be \_\_\_\_\_.

## Clue 2 A Shred of Evidence

On the floor, trapped beneath the fridge, is a scrap of material. It must have been torn from the naughty elf's hat as they ran away. Read the sentences below. Decide which prefix is needed to correctly complete the words. The prefix that is used the most will show you the colour of the sugar swapper's hat.

Sentence	dis-	mis-	in-
I can't believe an elf would ____behave in this way.			
We are so ____appointed that someone would do this.			
Who would make such an ____correct choice?			
It was wrong of the naughty elf to ____lead us.			
I totally ____agree with what the naughty elf has done.			
Mrs Claus has been ____credibly upset about this.			
The naughty elf has been so ____considerate.			
Surely, Mrs Claus didn't just ____read the recipe.			
Did the naughty elf simply ____appear after their trick?			
Who would ____respect Mrs Claus like this?			



If **dis-** is used the most,  
the elf's hat is **red**.



If **mis-** is used the most,  
the elf's hat is **white**.



If **in-** is used the most,  
the elf's hat is **green**.

The prefix which is used most is \_\_\_\_\_ so the naughty elf's hat must be \_\_\_\_\_.

## Clue 3 A Tasty Hint

Upon examining the kitchen floor, you find lots of crumbs. They must be from the naughty elf's favourite Christmas snack. Look at the root words below. Decide which prefix fits with each root word. The prefix with the most matching root words will show you what the sugar swapper likes to munch on at Christmas.

biography

market

septic

clockwise

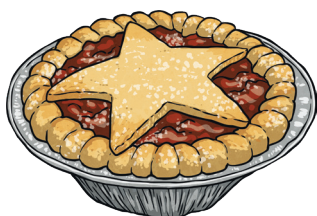
man

star

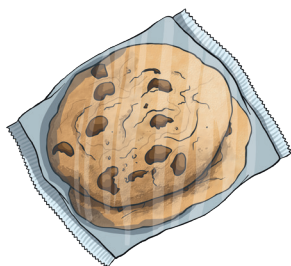
graph

social

biotic



If the prefix **super-** is used most, the culprit loves eating **mince pies**.



If the prefix **anti-** is used most, the culprit loves eating **cookies**.



If the prefix **auto-** is used most, the culprit loves eating **stollen**.

The prefix with the most matching root words is \_\_\_\_\_ so the naughty elf's favourite Christmas snack must be \_\_\_\_\_.

## Clue 4 Elf and Safety

You've heard a rumour amongst the elves about the job that the sugar swapper has in Santa's workshop. To know for sure, you must solve this puzzle. Each of these sentences has one piece of punctuation missing. Add the missing punctuation from the options below. The most common piece of missing punctuation will tell you the sugar swapper's job.

Bumble Zippy and Sparkles did not enjoy the Christmas pudding.

Mrs Claus Christmas pudding has been ruined.

Who could show such little respect

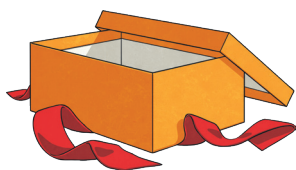
What a horrible trick that was

Will the police catch the elf before Boxing Day

Do the police know all of the elves whereabouts?

How rude of the elf to do that

I don't want to see the look on Santas face when he hears.



If a **question mark** is missing most, the elf is a **gift wrapper**.



If an **exclamation mark** is missing most, the elf is a **bow applier**.



If a **comma** is missing most, the elf is a **tree decorator**.



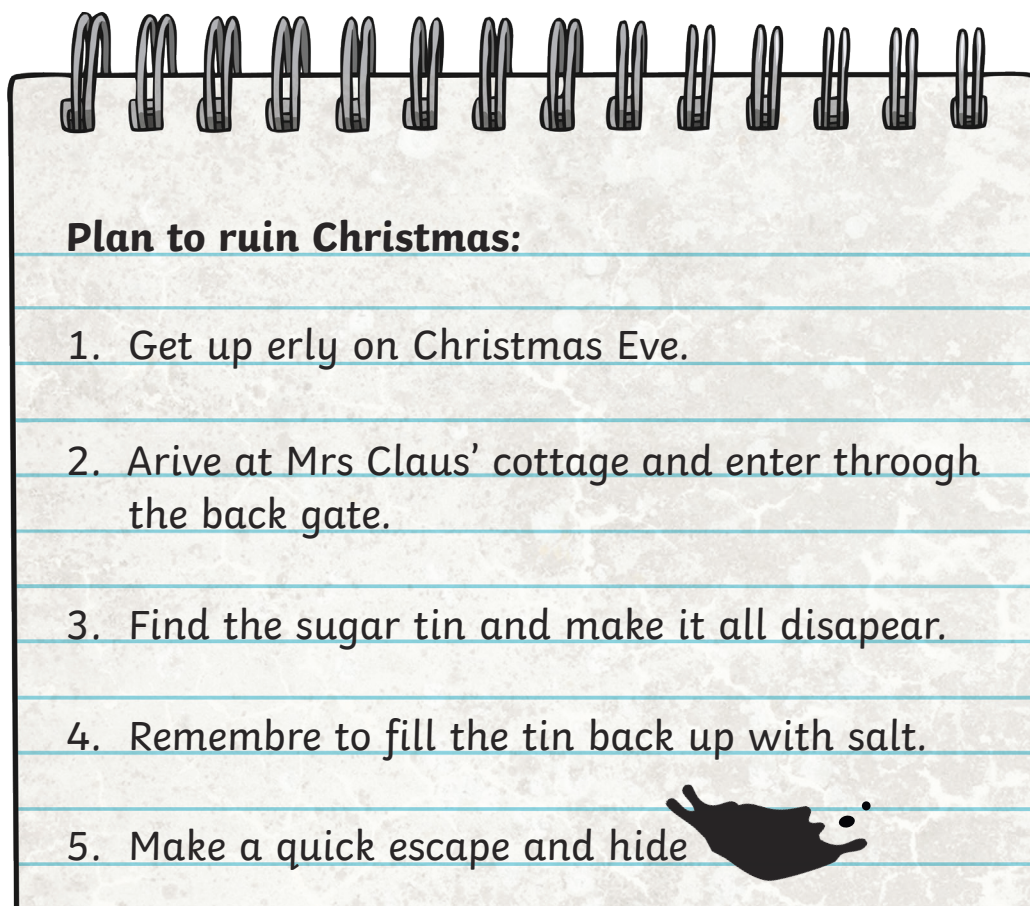
If an **apostrophe** is missing most, the elf is an **inventor**.

The most common piece of missing punctuation is \_\_\_\_\_ so the naughty elf must be \_\_\_\_\_.



## Clue 5 Putting Their Foot in It

Just as you were about to give up, you find a handwritten set of instructions written by the sugar swapper, explaining their entire plan in detail! Circle the words which are spelt incorrectly and write the correct spellings below. The total number of words spelt incorrectly is the same as the naughty elf's shoe size.



**Plan to ruin Christmas:**

1. Get up erly on Christmas Eve.
2. Arive at Mrs Claus' cottage and enter throough the back gate.
3. Find the sugar tin and make it all disapear.
4. Remembre to fill the tin back up with salt.
5. Make a quick escape and hide

There were \_\_\_\_\_ spelling mistakes in the note so that must be the elf's shoe size.